



# Foxit Enterprise Deployment and Configuration

*For Windows*

## ***Foxit Enterprise Deployment and Configuration***

Copyright © 2004-2015 Foxit Software Incorporated. All Rights Reserved.

No part of this document can be reproduced, transferred, distributed or stored in any format without the prior written permission of Foxit.

Anti-Grain Geometry – Version 2.4

Copyright (C) 2002-2004 Maxim Shemanarev (<http://www.antigrain.com>)

Permission to copy, use, modify, sell and distribute this software is granted provided this copyright notice appears in all copies. This software is provided "as is" without express or implied warranty, and with no claim as to its suitability for any purpose.

# Contents

<b>Contents</b> .....	<b>III</b>
<b>Introduction</b> .....	<b>1</b>
<b>About the User Manual</b> .....	<b>1</b>
<b>About Foxit Reader (Enterprise Version)</b> .....	<b>1</b>
<b>Foxit Reader (Enterprise Version) Overview</b> .....	<b>1</b>
<b>Installing Foxit Enterprise Reader</b> .....	<b>1</b>
<b>Enterprise Deployment and Configuration</b> .....	<b>8</b>
<b>Using Group Policy</b> .....	<b>8</b>
<b>What is Group Policy?</b> .....	<b>8</b>
<b>Personal Computer Setting</b> .....	<b>8</b>
<b>GPO Deployment (for Server)</b> .....	<b>10</b>
<b>GPO Items</b> .....	<b>15</b>
<b>Using XML Editor</b> .....	<b>18</b>
<b>Contact Us</b> .....	<b>20</b>

# Introduction

## About the User Manual

Welcome to Foxit Reader (Enterprise Version) -- your right choice to view and print PDF documents!

Foxit Reader (Enterprise Version) is developed on the basis of Foxit Reader (Desktop Version) , but it extends the usability and performance of viewing and editing of Foxit Reader (Desktop Version). This User Manual introduces the enterprise deployment and configuration of Foxit Reader. Please follow the instructions below for details.

## About Foxit Reader (Enterprise Version)

### Foxit Reader (Enterprise Version) Overview

Foxit Reader (Enterprise Version), hereafter referred to as Foxit Enterprise Reader, is a PDF document viewer and printer. It launches quickly and is easy to install. Just run “Foxit Enterprise Reader Setup.msi” and then follow the [installation guides](#) to complete installation.

Foxit Enterprise Reader enables users to create, edit and secure reliable PDF documents quickly, easily and economically. In addition to the basic PDF viewing functions, Foxit Enterprise Reader also includes various advanced features, such as RMS Protection, GPO Control, XML Control, etc.

### Installing Foxit Enterprise Reader

#### Windows System Requirements

Foxit Enterprise Reader runs successfully on the following systems. If your computer does not meet these requirements, you may not be able to use Foxit Enterprise Reader.

#### Operating Systems

- Windows Vista Home Basic, Home Premium, Business, Ultimate, or Enterprise with or without Service Pack 1(32-bit & 64-bit)
- Windows 7 (32-bit & 64-bit)
- Windows 8.x Full Version
- Windows Embedded Standard 7
- Microsoft Office® 2007 or later version (required for some PDF creation features)

## Foxit Enterprise Deployment and Configuration

- Citrix XenApp® 6

### Recommended Minimum Hardware for Better Performance

- 1.3 GHz or faster processor
- 512 MB RAM (Recommended: 1 GB RAM or greater)
- 1 GB of available hard drive space
- 1024\*768 screen resolution

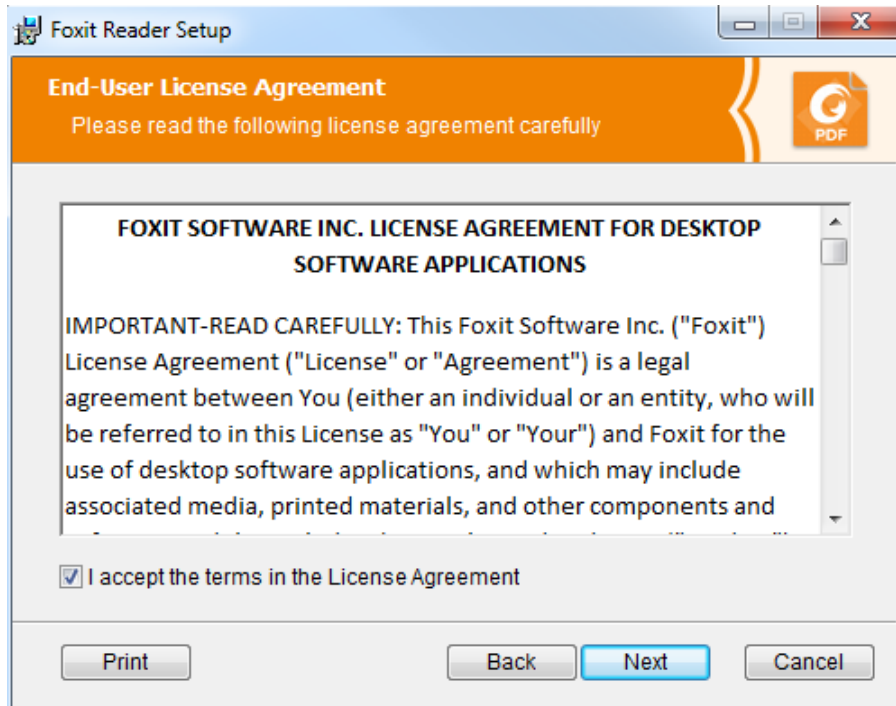
### How to Install?

- Double-click the installation file and you will see the Install Wizard pop up. Click **Next** to continue.



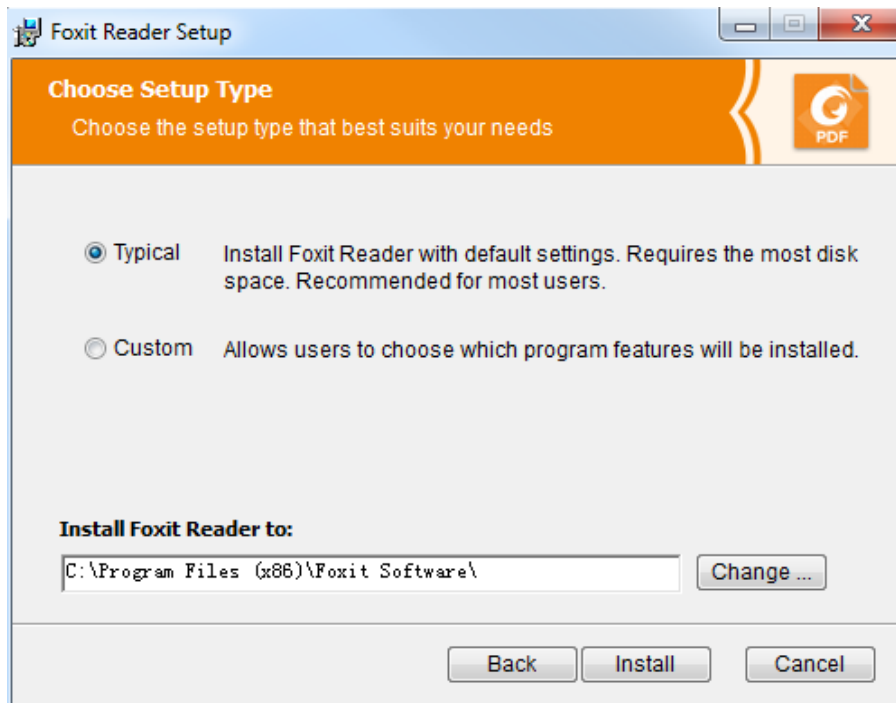
- In order to install Foxit Enterprise Reader on your system, you are required to accept the terms and conditions of Foxit's License Agreement. Please read the Agreement carefully and then check **I accept the terms in the License Agreement** and click **Next** to continue. If you cannot accept it, please click **Cancel** to exit the installation.

## Foxit Enterprise Deployment and Configuration



➤ Choose one of the setup types as needed:

- A. **Typical** –installs all features by default but requires more disk space.
- B. **Custom**—allows users to choose the features to be installed.

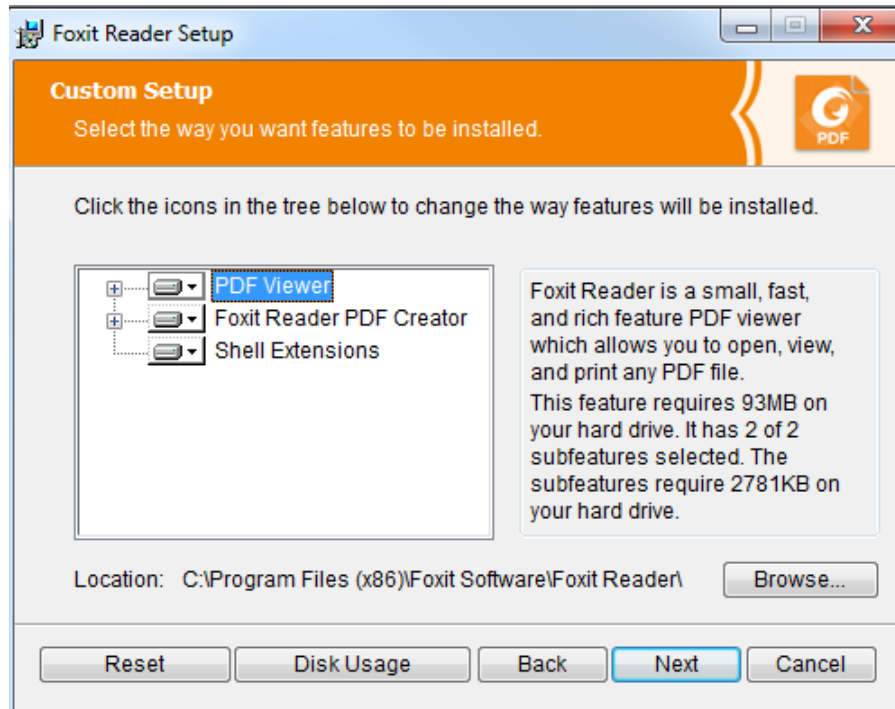


➤ For **Typical** setup, just click **Install**. For **Custom** setup, do the following:

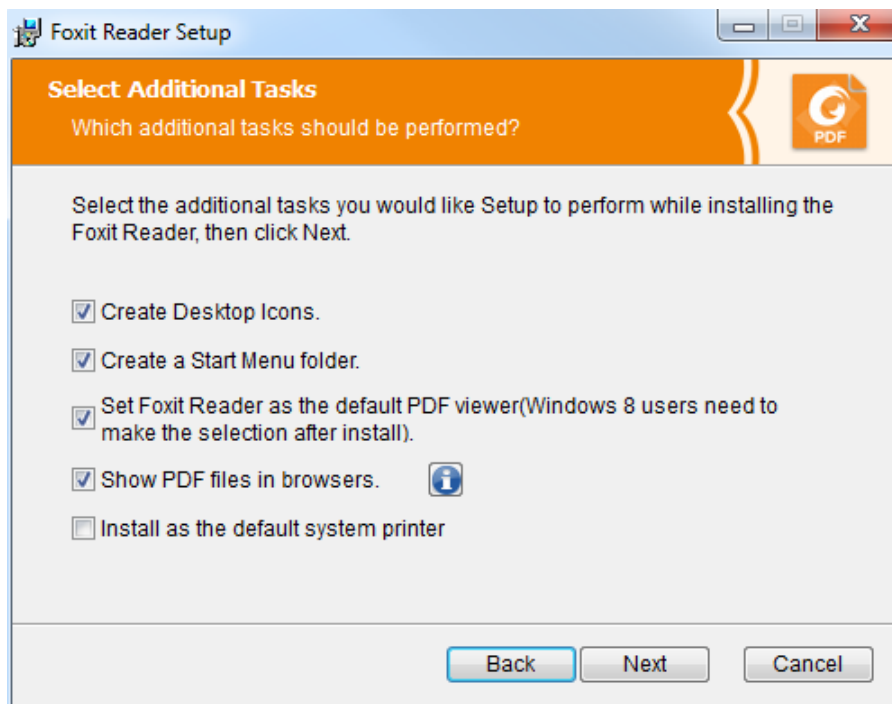
- A) Click **Browse** to change the installation directory of the PDF Viewer plug-in.

## Foxit Enterprise Deployment and Configuration

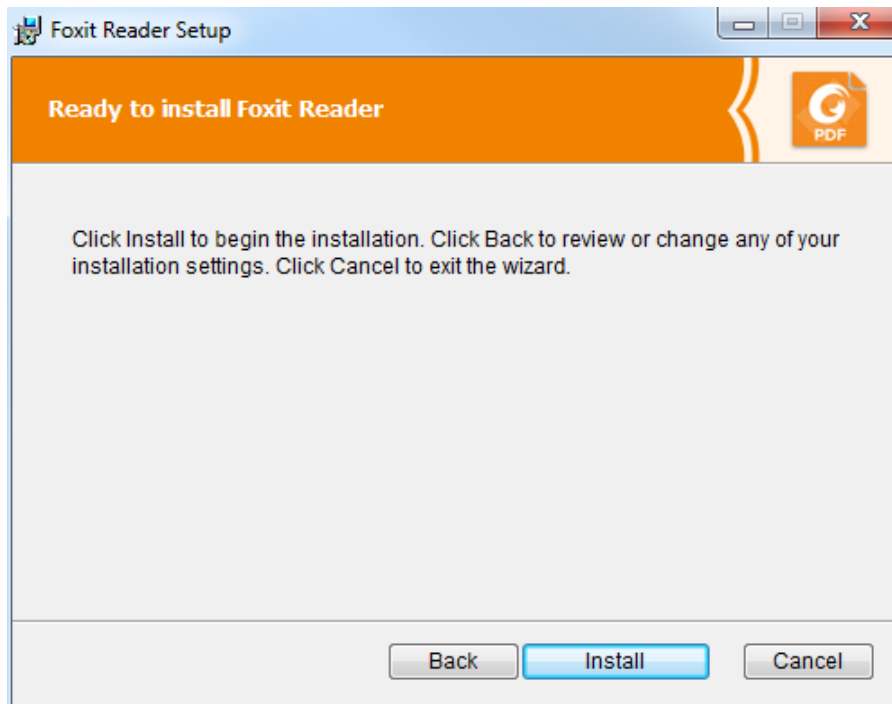
- B) Click **Disk Usage** to check the disk space available for the selected features.  
C) Check the options you want to install and click **Next** to continue.



- D) Select the additional tasks you would like to perform while installing Foxit Enterprise Reader, click **Next** and then **Install** to begin the installation.



## Foxit Enterprise Deployment and Configuration



- Finally, a message will appear to inform you the successful installation. Click **Finish** to complete the installation.



### Command-line Installation

You can also use the command-line to install the application:

```
msiexec /Option <Required Parameter> [Optional Parameter] [PROPERTY=PropertyValue]
```



## *Foxit Enterprise Deployment and Configuration*

For detailed information on msiexec.exe options, required parameters, and optional parameters, type "msiexec" on the command line or visit Microsoft TechNet help center.

### **Public Properties of the Foxit Reader MSI installation package.**

Foxit Reader installation properties supplement the standard MSI public properties to give administrators greater control over the installation of the application.

For the complete list of standard public properties please refer to:

[http://msdn.microsoft.com/en-gb/library/aa370905\(VS.85\).aspx](http://msdn.microsoft.com/en-gb/library/aa370905(VS.85).aspx)

The Foxit Reader properties are:

---

**ADDLOCAL** <list of features> The value of the ADDLOCAL property is a comma delimited list of features which the installation of Foxit Reader will make available locally. Foxit Reader installer defines the following features:

**FX\_PDFVIEWER** - Foxit PDF Viewer and its components;

**FX\_FIREFOXPLUGIN** - Plugin which is used for opening PDF files in Mozilla Firefox, Opera, Safari, and Chrome browsers. This feature requires FX\_PDFVIEWER feature to be installed.

**FX\_SPELLCHECK** - Spell check tool which is used for finding any misspelled words in typewriter or form filler mode and suggesting the correct spellings. This feature requires FX\_PDFVIEWER feature to be installed.

**FX\_SE** - Plugins for Windows Explorer and Windows shell. These extensions allow viewing PDF thumbnails in Windows Explorer, previewing PDF files in Windows Vista and Office 2007. This feature requires FX\_PDFVIEWER feature to be installed.

**FX\_CREATOR** - Foxit Reader Creator installs a virtual printer on your system. You can use Creator to convert any printable documents into high-quality PDFs conveniently and efficiently. This feature requires FX\_PDFVIEWER to be installed.

**FX\_CONVERTTEXT** - Shell extension which is used for converting PDF or combining supported files from right click menu. This feature requires FX\_CREATOR to be installed.

**FX\_CREATORWORDADDIN** - MS word toolbar add-in to create PDFs by just one click. This feature requires FX\_CREATOR to be installed.

**FX\_CREATOREXCELADDIN** - MS Excel toolbar add-in to create PDFs by just one click. This feature requires FX\_CREATOR to be installed.

## *Foxit Enterprise Deployment and Configuration*

**FX\_CREATORPPTADDIN** - MS PPT toolbar add-in to create PDFs by just one click. This feature requires FX\_CREATOR to be installed.

<b>INSTALLLOCATION</b>	Specifies the folder where products will be installed.
<b>MAKEDEFAULT</b>	Default value of "1", Foxit Reader will be set as default application for opening PDF files.
<b>VIEW_IN_BROWSER</b>	Default value of "1", Foxit Reader will be configured to open PDF files inside browsers.
<b>DESKTOP_SHORTCUT</b>	Default value of "1", installer will place a shortcut for the installed application on Desktop.
<b>STARTMENU_SHORTCUT</b>	Default value of "1", installer will create program menu group for installed application and its components.
<b>LAUNCHCHECKDEFAULT</b>	Default value of "1", Foxit Reader will check if the Reader is the default reader when it's launched.
<b>SAFEMODE</b>	Default value of "1", Foxit Reader will run in the Safe Reading Mode.
<b>CLEAN</b>	Executes with the command /uninstall, removing all of Reader's registry data and related files with the value of "1". (Note: This is a command for uninstallation.)
<b>AUTO_UPDATE</b>	Do not download or install updates automatically with the value of "0"; Automatically download updates, but let users choose when to install them with the value of "1"; Automatically install updates with the value of "2".
<b>REMOVE_NEWVERSION</b>	Forces an installation to overwrite the higher version of Foxit Reader with the value of "1".
<b>REMOVE_GAREADER</b>	Forces to uninstall Foxit Reader (Desktop Version).

Command-line Examples:

1. Silently install the application (no user interaction) to folder "C:\Program Files\Foxit Software":

```
msiexec /i "Foxit Reader.msi" /quiet INSTALLLOCATION="C:\Program Files\Foxit Software "
```

2. Install Foxit PDF Viewer only:

## Foxit Enterprise Deployment and Configuration

```
msiexec /i "Foxit Reader.msi" /quiet ADDLOCAL="FX_PDFVIEWER"
```

3. Force an installation to overwrite the same or higher version of Foxit Reader:

```
msiexec /i "Foxit Reader.msi" REMOVEEXISTINGVERSION="1"
```

4. Remove registry and user data when performing silent uninstallation:

```
msiexec /x "Foxit Reader.msi" /quiet CLEAN="1"
```

# Enterprise Deployment and Configuration

## Using Group Policy

### What is Group Policy?

Group Policy (GPO), a feature of the Microsoft [Windows NT](#) family of [operating systems](#), is a set of rules that control the working environment of user accounts and computer accounts. It offers the centralized management and configuration of operating systems, applications, and users' settings in an [Active Directory](#) environment.

Group Policy can configure most system settings, save power by utilizing smart power settings, give individual users more control over their machines with administrator privileges and increase system security.

Group Policy in part controls what users can and cannot do on a certain program to accomplish the goal of central management of a group of applications. Users can configure Foxit Enterprise Reader easily through Group Policy. Please refer to the instructions below for details.

### Personal Computer Setting

Foxit Enterprise Reader offers two types of group policy template: .adm and .admx. Different types are compatible with different operation systems, but have the same settings. The template of .adm file type is compatible with Windows XP and later, while .admx is compatible with Server 2008, Server 2012, Windows Vista and later.

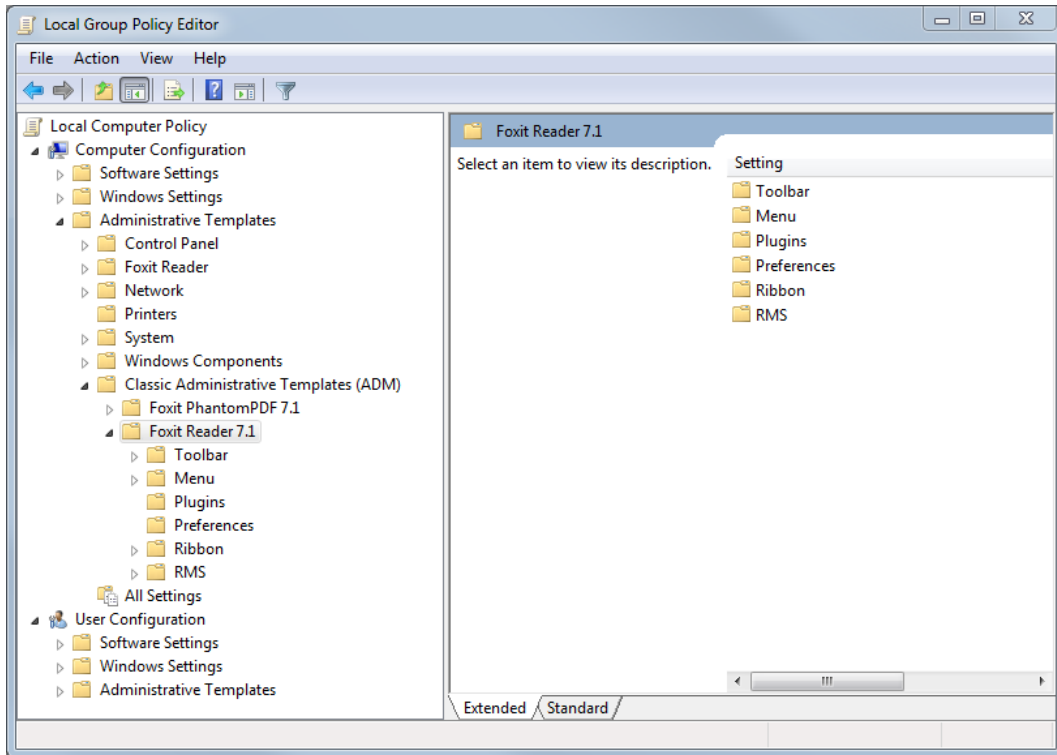
### Set Template Preference

For .adm file, follow the steps as below:

- Please click **Start > Run** or use the shortcut key Windows + R and type gpedit.msc to open **Local Group Policy Editor**.
- Right-click the management template and choose **Add/Remove Templates** in the context

## Foxit Enterprise Deployment and Configuration

menu. In the opened dialogue box, add the group policy template of Foxit Reader (Foxit Enterprise Reader7.1.adm). The Foxit Reader template will appear in the left navigation pane and you can set its template preferences.



For .admx file, put the .admx file in C:\Windows\PolicyDefinitions and do the setting. The .admx file should be used in combination with an .adml file. And the .adml file should be put in C:\Windows\PolicyDefinitions\language. For example, if in the English OS, the .adml file should be put in C:\Windows\PolicyDefinitions\en\_us.

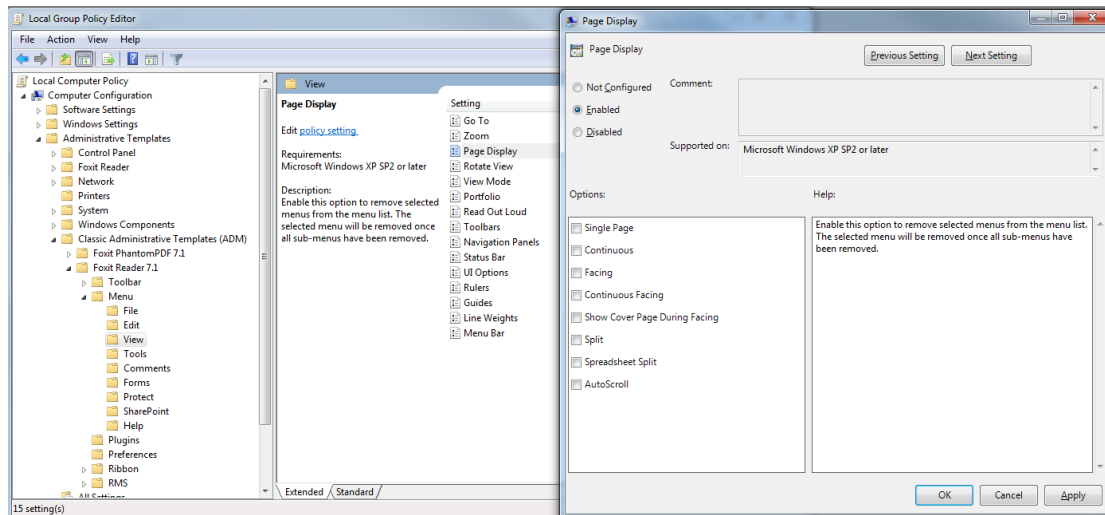
Take **Set the Page Display menu** as an example and other options are configured in the same fashion.

- Choose **Foxit Reader > Menu > View > Page Display**.
- Double-click **Page Display** to open the dialog box.
  - Select **Enabled**, check the submenus to be removed in the **Options**, and the corresponding submenu items will be removed from Foxit Reader.

**Note:** If you select all the submenus in the **Options** and confirm the configuration, all the submenus under Page Display will be removed.

- Select **Disabled** or **Not Configured**, and no changes will be made to the display status of Foxit Reader.

## Foxit Enterprise Deployment and Configuration



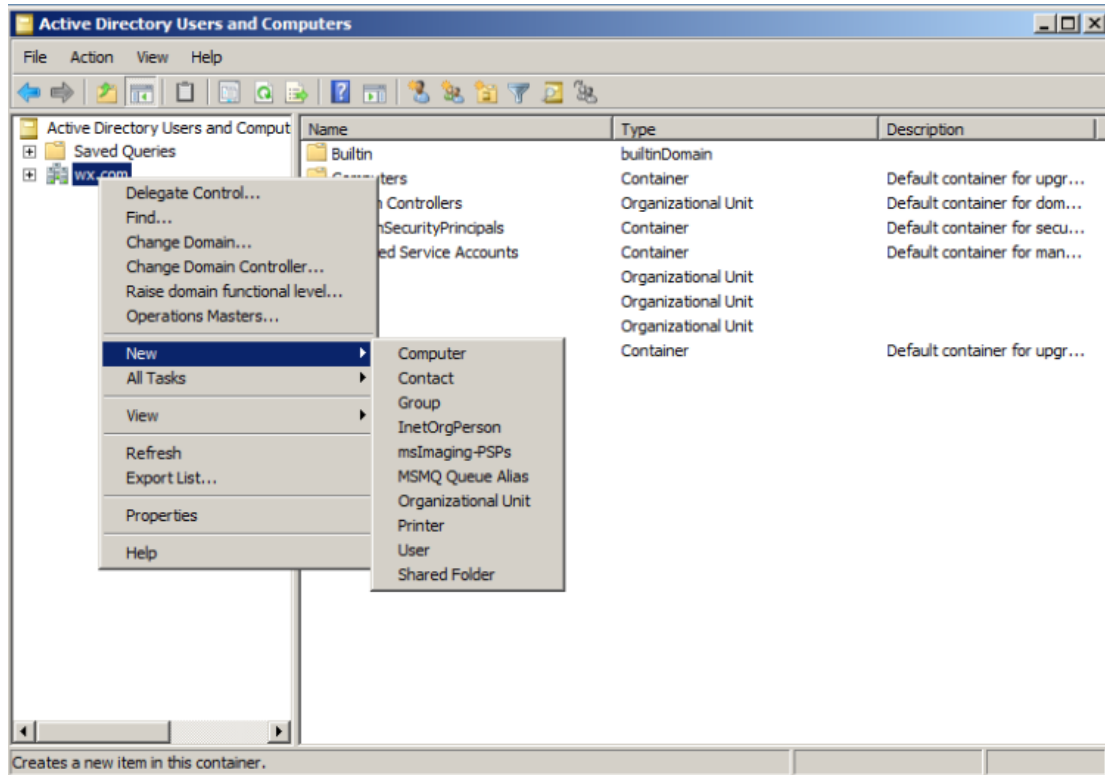
**Note:** Group Policy setting includes computer configuration and user configuration. Computer configuration takes precedence over user configuration. The application will use the computer configuration if both the computer and user configure a specific function at the same time.

### GPO Deployment (for Server)

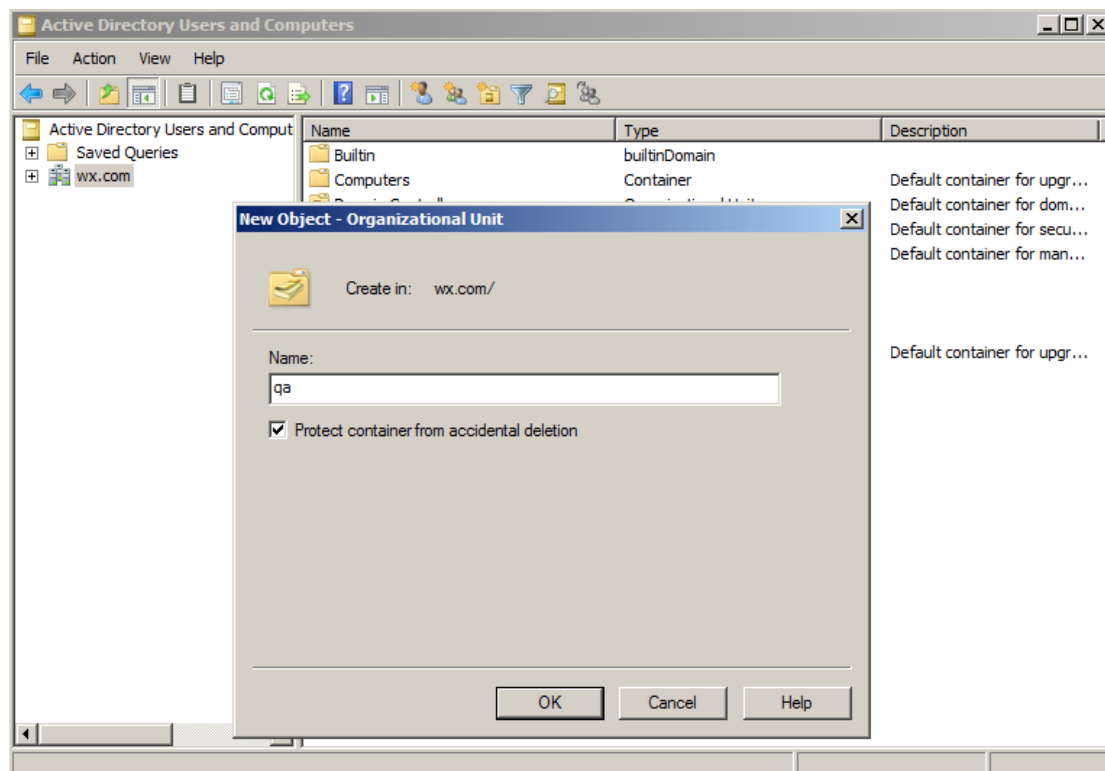
#### Create GPO Management

- If you already have an Active Directory domain and organizational unit configured, please skip to “Apply the Foxit Template” section.
- Choose **Start > Administration Tools >** open “Active Directory Users and Computers” > right-click the field “wx.com” > choose **New > Organization Unit** in the right-click menu.

## Foxit Enterprise Deployment and Configuration



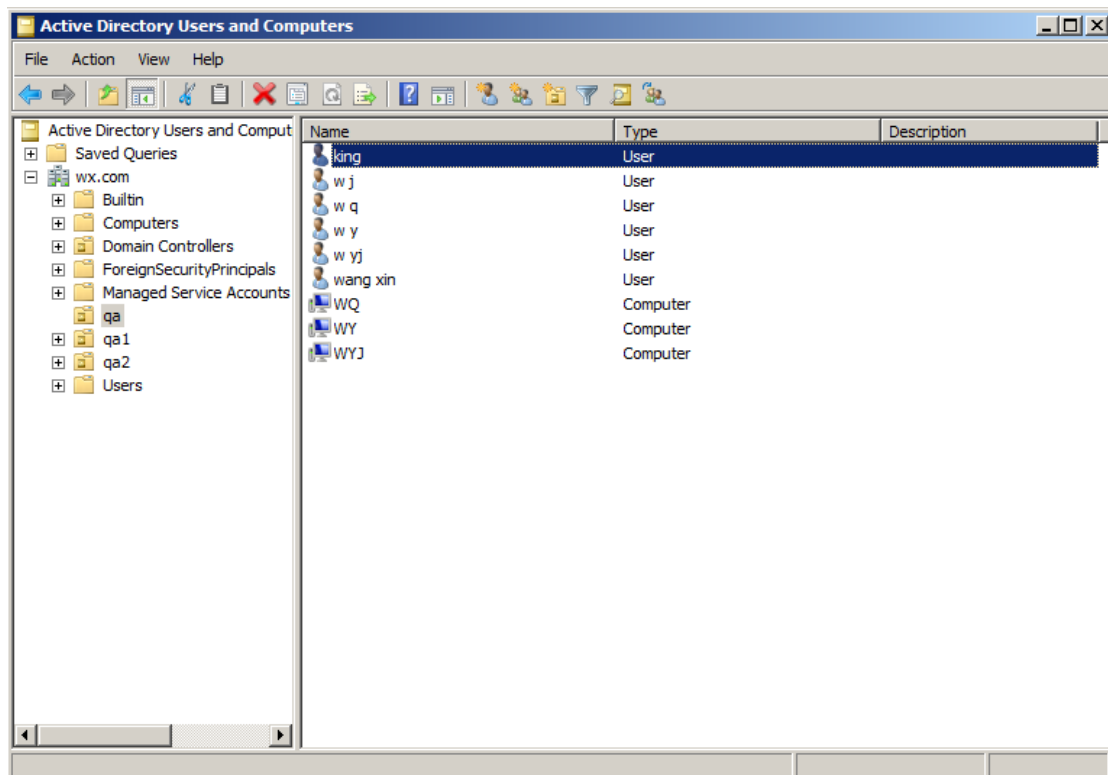
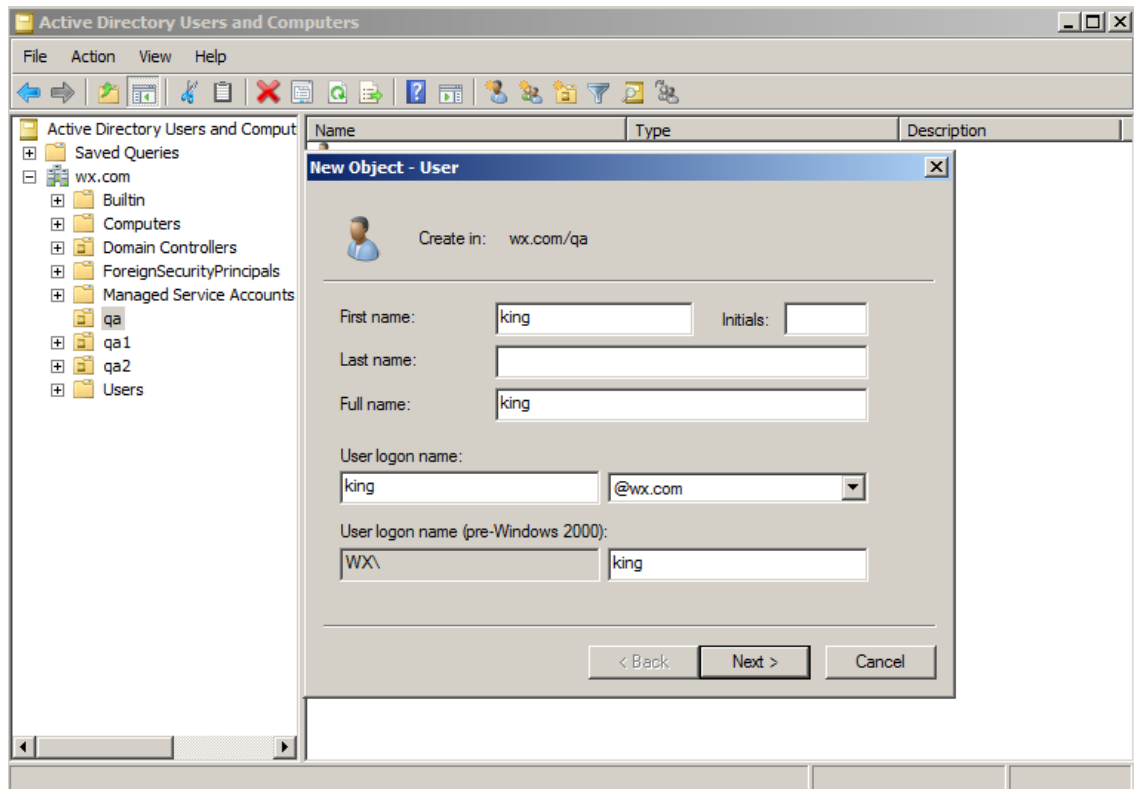
- In the opened **New Object-Organization Unit** dialogue box, type the unit name (For this example, we have named the unit “qa”) and click **OK**.



- Right click the created organization unit “qa” and choose **New > User** in the right-click menu.

## Foxit Enterprise Deployment and Configuration

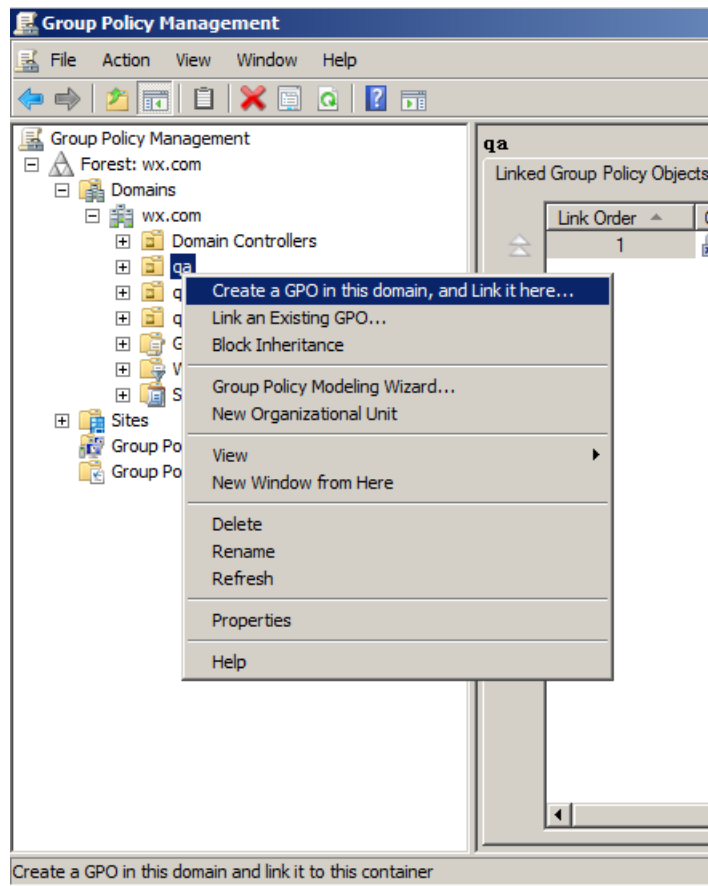
For this example, we have named the user “King”.



- Click **Start > Programs > Administration Tools > open the Group Policy Management**

## Foxit Enterprise Deployment and Configuration

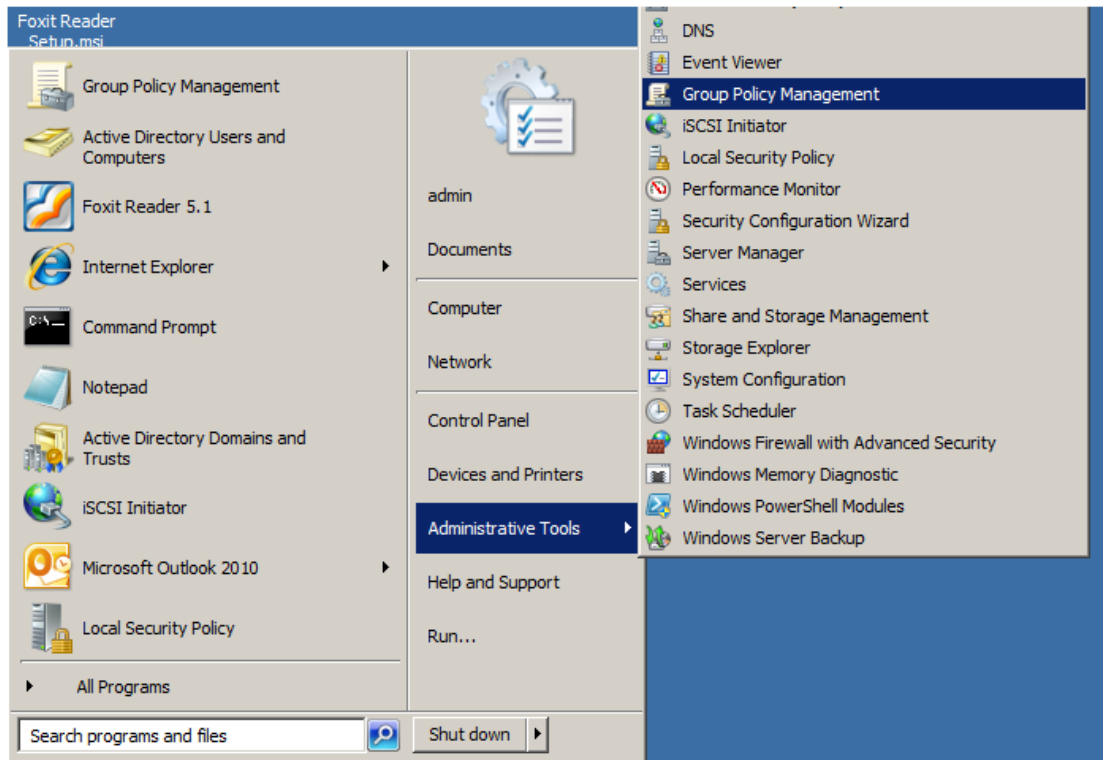
**Console** and right-click the created organization unit “qa” and choose **Create a GPO in this domain, and Link it here.**



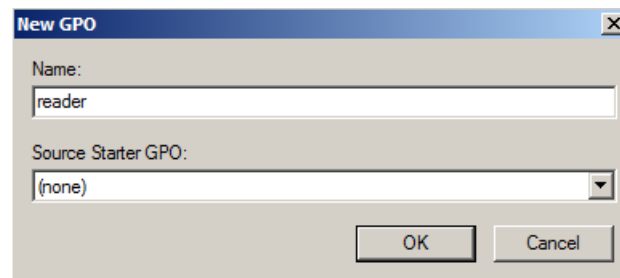
If you cannot find the Group Policy Management in Administration Tools, please install the application package GPMC.MSI. You can download the package by clicking the link <http://www.microsoft.com/en-us/download/details.aspx?id=21895>.



### Apply the Foxit Template

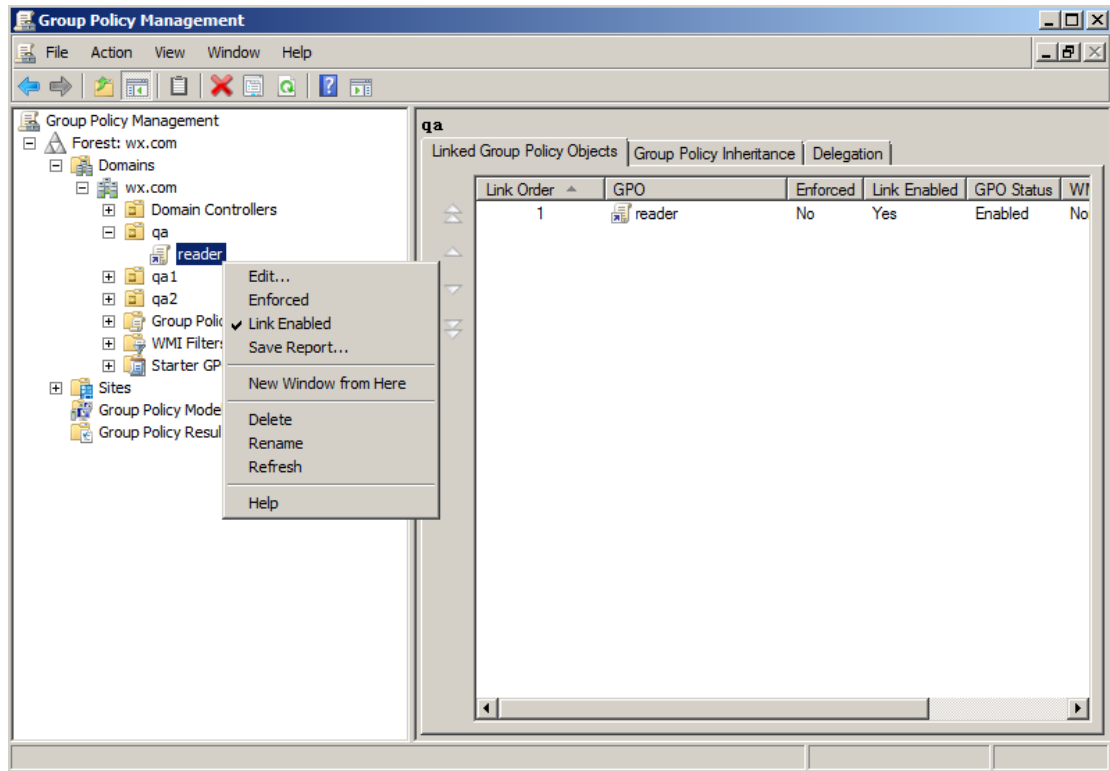


- Type the GPO name in the **New GPO** dialogue box and click **OK**.

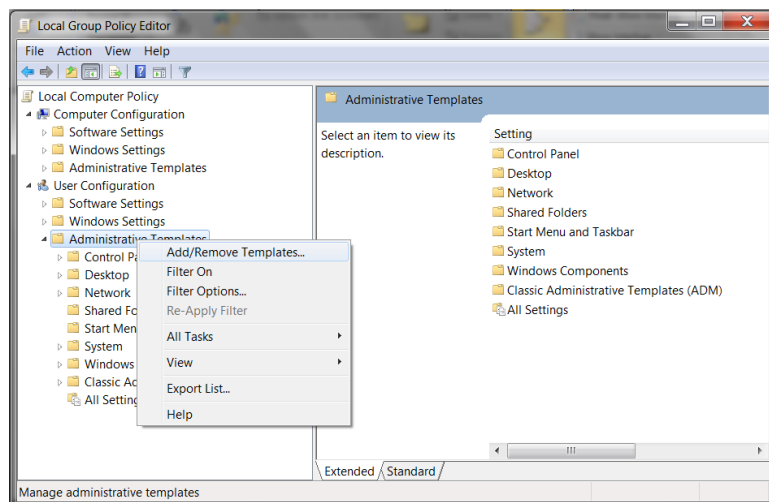


- Right-click the new GPO and choose **Edit** in the right-click menu to open **Group Policy Editor**.

## Foxit Enterprise Deployment and Configuration



- Right-click the **Template Management** and choose **Add/Remove Templates** to add Foxit EnterpriseReader7.1.adm. Please refer to [Set Template Preference](#).



- For configuring options, please refer to Example: [Set the Page Display](#).

### GPO Items

The following table shows the deployable options and their functions in GPO to speed up your working process.

## Foxit Enterprise Deployment and Configuration

### Items in GPO Template

Folder Path	Item	Description
Foxit Reader > Toolbar	Customize Toolbar	Select the tools to be displayed in the default toolbar.
	Remove Buttons	Delete buttons from the default toolbar. To remove the toolbar, remove all the buttons.
Foxit Reader > Menu		Remove selected menus from the menu list. The selected menu will be removed once all sub-menus have been removed.
Foxit Reader > Plugins	Remove Specific Plugins	Input the plugin name which needs to be removed.  Only applications with .fpi extensions can be removed from Foxit Reader.
	Remove Plugins	Remove selected plugins.
Foxit Reader > Preferences	'About Foxit Reader' Dialog	Set the new contents in 'About Foxit Reader' dialog.
Foxit Reader > Preferences	Default PDF Viewer	Set Foxit Reader as the default PDF viewer for 'System PDF Viewer' and 'Web Browser PDF Viewer'.
Foxit Reader > Preferences	Forbid Checking of Default PDF Viewer	Hide the 'Set to Default PDF Reader' dialog when Foxit Reader isn't the default PDF viewer.
Foxit Reader > Preferences	Home Page Settings	Set the new contents of 'Help > Foxit Home Page'.
Foxit Reader > Preferences	Program Name	Change the program's name. The default is 'Foxit Reader'.
Foxit Reader > Preferences	Remove 'Registration'	Forbid 'Registration' dialog and remove 'Registration' item from 'Help' tab.
Foxit Reader > Preferences	Advertisement	Change the settings of advertisement in right corner of the tab bar.
Foxit Reader > Preferences	Application Language	Change the application language settings.
Foxit Reader > Preferences	Start Page	Change the settings of Start Page.
Foxit Reader > Preferences	Status Bar	Change the settings of Status Bar.

## Foxit Enterprise Deployment and Configuration

Foxit Reader > Preferences	Enable Safe Reading Mode	Change the settings of Safe Reading Mode.
Foxit Reader > Preferences	Toolbar Mode	Change the settings of Toolbar Mode.
Foxit Reader > Preferences	Default Toolbar	Change settings of the toolbars: 'Forbid Modification' or 'Hide Toolbar'.
Foxit Reader > Preferences	Enable The Link For User Manual	Enable this option to change the link of User Manual to the local link you want.
Foxit Reader > Preferences	Disable the Automatically Update	Enable this option to disable the Automatically Update. With this option checked, the Automatically Update will be disabled.
Foxit Reader > Ribbon		Hide the selected button items in Ribbon Mode.
Foxit Reader > RMS > Preferences	Use Deprecated Encryption Algorithms	Use deprecated encryption algorithms (RSA 1024 encryption algorithm) to be compatible with the previous version and disable the setting in 'Preferences > RMS Setting'.
Foxit Reader > RMS > Preferences	Use AD RMS Plugin Version 1	Use the AD RMS plugin version 1, which supports Windows XP. The protected PDF files will be saved in Foxit protected PDF format and can only be opened by Foxit products. RMS plugin version 1 only supports SHA-1/RSA 1024 algorithm for encryption and decryption.
Foxit Reader > RMS > Preferences	Save As	Turn on the Save As feature for RMS protected files.
Foxit Reader > RMS > Preferences	Forbid Web Viewing of Protected Content	Forbid viewing of protected content in browsers using the Foxit plugin.
Foxit Reader > RMS > Preferences	Extended Rights	Turn on the extended rights feature in the client. Extended rights allow the document owner to control the following items: Access times: Limit times that users can access a document. Print times: Limit times that users can print a document.
Foxit Reader > RMS >	Encrypt Metadata	Encrypt document metadata. This disables the setting in 'Preferences > RMS Setting'.

## Foxit Enterprise Deployment and Configuration

Preferences		
Foxit Reader > RMS > Preferences	Dynamic Revocation	Turn on the dynamic revocation feature in the client. Revocation is a mechanism that revokes a PDF document that has already been issued. The primary purpose of revocation is to prevent entities that are no longer trusted from participating in an RMS system.
Foxit Reader > RMS > Preferences	Add 'protected' to the name of encrypted files	Append "(protected)" to the end of the file name of encrypted files.
Foxit Reader > RMS > Preferences	Microsoft IRM Protection	Enable this option to use the Microsoft IRM Version 1, which is a Microsoft extension to the PDF format to support Microsoft IRM protection. The extension allows PDF documents to be encrypted by Microsoft IRM technology that is implemented by Microsoft's Active Directory Rights Management Server as well as by Azure Active Directory Rights Management Services. If not defined, Microsoft IRM Protection Version 2 (PPDF) is used.
Foxit Reader > RMS > Preferences	RMS Interoperability	If you enable this option, all the encrypted PDFs will conform to Microsoft IRM Protection for PDF Specification and hence be able to be decrypted by other RMS Viewer.

### Using XML Editor

Besides GPO Configuration, users can also configure Foxit Enterprise Reader by XML Configuration. XML configuration takes precedence over GPO configuration. The application will use the XML configuration if both the XML and GPO configure a specific function at the same time.

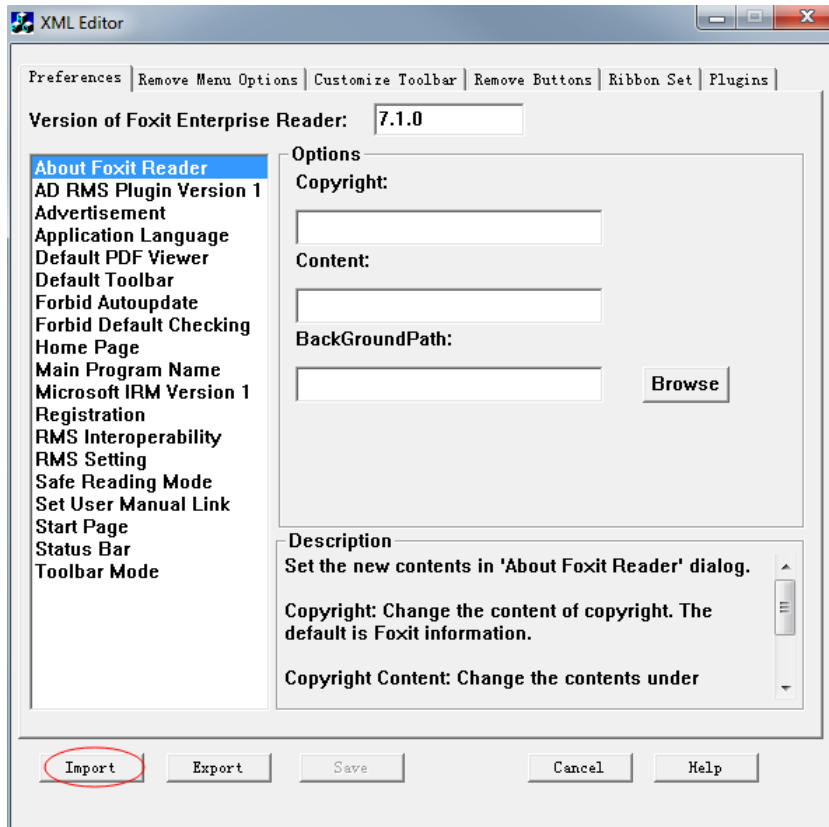
The XML file in Reader's folder (C:\Program Files (x86)\Foxit Software\Foxit Reader\ProfStore) can be configured with XML Editor. The configurable items of XML file are the same with GPO, please refer to [GPO Items](#) for details.

To configure a XML file with XML Editor, please follow the steps below:

- Open the XML Editor.
- Click **Import** to import the XML file to be configured. Please ensure that the XML file you import is compatible with your currently-used version of Foxit Enterprise Reader. If not, you

## Foxit Enterprise Deployment and Configuration

should change the version number to the one of your currently-used application in the Version box (the version number should be 7.x.x).



- Set the preferences in the corresponding menus. For example, choose **Preferences** Tab > click **Start Page** on the left panel > check **Hide Start Page** to remove the start page from Foxit Enterprise Reader.
- Click **Save** to save the configured XML file.

**Note:** (Alternatively) You can configure relevant items by XML Editor directly, then export and save the XML file in C:\Program Files (x86)\Foxit Software\Foxit Reader\ProfStore to replace the default XML file of Foxit Enterprise Reader.

## Contact Us

Feel free to contact us should you need any information or have any problems with our products. We are always here, ready to serve you better.

- **Office Address:**  
Foxit Software Incorporated  
42840 Christy Street. Suite 201  
Fremont CA 94538  
USA
- **Mailing Address:**  
Foxit Software Incorporated  
42840 Christy Street. Suite 201  
Fremont CA 94538  
USA
- **Sales:**  
1-866-680-3668 (24/7)
- **Support:**  
1-866-MYFOXIT or 1-866-693-6948 (24/7)
- **Fax:**  
1-510-405-9288
- **Website:**  
[www.foxitsoftware.com](http://www.foxitsoftware.com)
- **E-mail:**  
Sales and Information - [sales@foxitsoftware.com](mailto:sales@foxitsoftware.com)  
Technical Support - Input [a trouble ticket online](#)  
Marketing Service - [marketing@foxitsoftware.com](mailto:marketing@foxitsoftware.com)