



Foxit PDF Editor Deployment and Configuration

For Windows

Microsoft® Partner

Gold Independent Software Vendor (ISV)

© Foxit Software Incorporated. All Rights Reserved.

No part of this document can be reproduced, transferred, distributed or stored in any format without the prior written permission of Foxit.

Anti-Grain Geometry - Version 2.4

© Maxim Shemanarev (<http://www.antigrain.com>)

Portions of this product Copyright [2001-2022] Solid Documents

Permission to copy, use, modify, sell and distribute this software is granted provided this copyright notice appears in all copies. This software is provided "as is" without express or implied warranty, and with no claim as to its suitability for any purpose.

Contents

Contents	3
Introduction	4
About Foxit PDF Editor	4
Foxit PDF Editor Overview.....	4
Installing Foxit PDF Editor	4
Command-line Installation for EXE installers	6
Command-line Installation for MSI installers.....	7
Deployment and Configuration	11
Using Group Policy	11
What is Group Policy?	11
Personal Computer Setting.....	11
GPO Deployment (for Server).....	13
GPO Items	19
Using Foxit Customization Wizard	32
Get started	32
Contact Us	34

Introduction

This document is intended for administrators to deploy and configure Foxit PDF Editor in an enterprise environment. Please follow the instructions below for details.

About Foxit PDF Editor

Foxit PDF Editor Overview

Welcome to Foxit PDF Editor - Business Ready PDF! Award-winning Foxit PDF Editor provides the right features at the right price, allowing you to produce great looking PDF document and forms quickly, affordably, and securely. Foxit PDF Editor comes in two editions: **Foxit PDF Editor** to fit the small and medium sized businesses, and **Foxit PDF Editor Pro** to fit the large enterprises.

Installing Foxit PDF Editor

System Requirements

Operating Systems

- Windows 11, 10, 8.
- Microsoft Office® 2010 or later version (required for some PDF creation features).
- Verified as Citrix Ready® with Citrix XenApp® 7.13.

Recommended Minimum Hardware for Better Performance

- 1.3 GHz or faster processor (x86 compatible) or ARM processor, Microsoft SQ1 or better.
- 512 MB RAM (Recommended: 1 GB RAM or greater).
- 2G of available hard drive space.
- 1024*768 screen resolution.
- Supports 4K and other high-resolution displays.

How to Install

The installer format of Foxit PDF Editor can be EXE or MSI. Please download the installer to your computer, and then do the following (Take Foxit PDF Editor *Pro* for example):

For an EXE installer:

1. Double-click the EXE file, and you will see the setup wizard pop up.

2. Foxit PDF Editor is protected by copyright law, so in order to proceed, you must accept the License Agreement. Check the **Agree with the License Agreement** box to continue.
3. (Optional) You can select or deselect the **Help improve user experience** option to turn on or off data collection. The collected data will be used to improve user experiences only. The setting for this option will not affect the following installation process.
4. You can click **Quick Install** to start the installation immediately with default settings, or click **Advanced Setting** and do the followings to customize your installation:
 - A) Click on the horizontal three-dot icon to change the installation directory.
 - B) (Optional) Choose a language you want to install from the **Language** box.
 - C) In the **Settings** tab, select the options you would like the setup to perform.
 - D) In the **Components** tab, select the options you want to install.
 - E) (Optional) Click **Back** to go back to the previous step.
 - F) Click **Install** to start the installation.
5. When the process is complete, a dialog box will notify the user that Foxit PDF Editor is successfully installed. You can click **Start now** to run the application right after installation.

For an MSI installer:

1. Double click the MSI file, and you will see the setup wizard pop up. Click **Next** to continue.
2. Foxit PDF Editor is protected by copyright law, so in order to proceed, you must accept the License Agreement. Check the **I accept the terms in the License Agreement** box to continue.
3. (Optional) You can select or deselect the **Help improve user experience** option to turn on or off data collection. The collected data will be used to improve user experiences only. The setting for this option will not affect the following installation process.
4. There are two installation setup types for Foxit PDF Editor. The user has the ability to change the installation directory or to keep the default settings.

Typical — Installs all features by default, which requires more disk space.

Custom — Allows users to choose which program features will be installed.
5. For the **Typical** setup, just click **Install**. If you choose the **Custom** setup, click **Next** and do the following:
 - A) Click on **"Browse"** to change the installation directory of the PDF Viewer plug-in.
 - B) Click **"Disk Usage"** to check the disk space available for the selected features.
 - C) Check the options you want to install and click **"Next"** to continue.
 - D) Select the additional tasks you would like the Setup to perform, then click **"Install"** to start the installation.
6. When the process is complete, a dialog box will notify the user that Foxit PDF Editor is installed. You can choose to check the **Launch Foxit PDF Editor** box to run the application right after installation. Click **Finish** to complete the installation.

Command-line Installation for EXE installers

You can use the command-line to install the application:

<The full path to the installer> [Optional Parameter] [PROPERTY=PropertyValue]

The Foxit PDF Editor properties are:

/help	Pops up a dialog box that shows you the supported command lines.
/install	Installs Foxit PDF Editor.
/repair	Repairs the installation.
/uninstall	Uninstalls the installation.
/quiet	Silently installs the application (no user interaction) to folder "C:\Program Files\Foxit Software\Foxit PDF Editor".
/norestart	Suppresses any attempt for a system reboot during the installation.
/log <path>	Specifies the path to the log file.
/lang <en de es fr it jp ko nl pt ru zh-tw zh pl da-DK fi-FI nb-NO sv-SE>	Specifies the installation language. This property is available for multi-language installers only.
/DIR [directory]	Specifies the folder where products will be installed.
/DisableLiveChat	Dock the floating Live Chat to the status bar or to the right side of the application window if the status bar is hidden.
/clean	Removes all of Foxit PDF Editor's registry data and related files.
/keycode	Activates the application by key code.
/DISABLE_UNINSTALL_SURVEY	Stops the Uninstall Survey after uninstallation by setting the value to "1".

/DisableInternet	Disables all features that require Internet connection.
/displayadobeindoc	Uses Foxit PDF Editor to open embedded Acrobat files and embedded Foxit PDF Reader files in Microsoft Office.
/noshortcut	Does not create a shortcut on the desktop. By default, a shortcut will be created after installation.

Command-line Installation for MSI installers

You can also use the command-line to install the application:

```
msiexec /Option <Required Parameter> [Optional Parameter] [PROPERTY=PropertyValue]
```

For more detailed information on msiexec.exe, as well as required and optional parameters, type “msiexec” in the command line or visit Microsoft TechNet Help Center.

Public Properties of the Foxit PDF Editor MSI Installation Package.

Foxit PDF Editor installation properties supplement the standard MSI public properties to give administrators greater control over the installation of the application.

For the complete list of standard public properties, please refer to:

[http://msdn.microsoft.com/en-gb/library/aa370905\(VS.85\).aspx](http://msdn.microsoft.com/en-gb/library/aa370905(VS.85).aspx)

The Foxit PDF Editor properties are:

ADDLOCAL <list of features> The value of the ADDLOCAL property is a comma-delimited list of features that the installation of Foxit PDF Editor will make locally available. Foxit PDF Editor installer is composed of the following features:

FX_PDFVIEWER - Foxit PDF Viewer and its components.

FX_FIREFOXPLUGIN – A plugin used for opening PDF files in Internet Explorer. This feature requires FX_PDFVIEWER to be installed.

FX_SPELLCHECK - A tool used for searching any misspelled words in typewriter or form filler mode. This tool also suggests the correct spelling for common mistakes. This feature requires FX_PDFVIEWER to be installed.

FX_PDFA – A module used for verifying compliance with PDF/A-1a and PDF/A-1b. This feature requires FX_PDFVIEWER to be installed.

FX_OCR – A module used for making scanned or image-based PDF documents selectable and searchable. This feature requires FX_PDFVIEWER to be installed.

FX_CREATOR - Foxit PDF Creator installs a virtual printer on your system. Creator can convert any printable documents into high-quality PDFs conveniently and efficiently. This feature requires FX_PDFVIEWER to be installed.

FX_CONVERTTEXT - Shell extension used for converting PDFs or combining supported files from the right click menu. This feature requires FX_CREATOR to be installed.

FX_CREATORWORDADDIN - MS Word toolbar add-in to create PDFs in just one click. This feature requires FX_CREATOR to be installed.

FX_CREATOREXCELADDIN - MS Excel toolbar add-in to create PDFs in just one click. This feature requires FX_CREATOR to be installed.

FX_CREATORPPTADDIN - MS PPT toolbar add-in to create PDFs in just one click. This feature requires FX_CREATOR to be installed.

FX_CREATOROUTLOOKADDIN - MS Outlook toolbar add-in to create PDFs in just one click. This feature requires FX_CREATOR to be installed.

FX_SE - Plugins for Windows Explorer and Windows shell. These extensions allow PDF thumbnails to be viewed in Windows Explorer, and PDF files to be previewed in Windows OS and Office 2010 (or a later version). This feature requires FX_PDFVIEWER to be installed.

FX_IFILTER – Foxit PDF IFilter is a plugin for Windows search engines that can help search PDF documents quickly.

	FX_BROWSERADDIN - The web browser plugin used for converting web pages to PDFs.
INSTALLLOCATION	Specifies the folder location of the product installed.
MAKEDEFAULT	Default value of "1", Foxit PDF Editor will be set as the default application for opening PDF files.
VIEW_IN_BROWSER	Default value of "1", Foxit PDF Editor will be configured to open PDF files inside browsers.
DESKTOP_SHORTCUT	Default value of "1", installer will place a shortcut for the installed application on the Desktop.
STARTMENU_SHORTCUT	Default value of "1", installer will create a program menu group for installed application and its components.
SETDEFAULTPRINTER	Default value of "1", installer will install Foxit PDF Editor Printer and set it as the system's default printer.
LAUNCHCHECKDEFAULT	Default value of "1", Foxit PDF Editor will check if Foxit PDF Editor is the default reader when launched.
KEYPATH	Specifies a license key file and saves it to the Foxit PDF Editor installation folder.
REMOVENEWVERSION	Forces an installation to overwrite the newer version of Foxit PDF Editor with the value of "1".
CLEAN	Executes with the command "/uninstall", removing all of Foxit PDF Editor's registry data and related files with the value of "1". <i>(Note: This is a command for uninstallation.)</i>
AUTO_UPDATE	Does not download or install updates automatically with the value of "0"; automatically checks for updates and downloads updates if any, but lets users choose when to install them with the value of "1"; automatically installs updates with the value of "2". The default value is "1".
EDITION	Specifies an edition to install Foxit PDF Editor.
NOTINSTALLUPDATE	Does not install updates by setting the value to "1". This will prevent Foxit PDF Editor from being updated from within the software.

INTERNET_DISABLE	Disables all features that require Internet connection by setting the value to "1".
READ_MODE	Opens PDF file in Read Mode by default in web browsers by setting the value to "1".
DISABLE_UNINSTALL_SURVEY	Stops the Uninstall Survey after uninstallation by setting the value to "1".
KEYCODE	Activates the application by key code.
EMBEDDED_PDF_INOFFICE	With the value of "1", opens embedded PDF files in Microsoft Office with Foxit PDF Editor if Acrobat and Foxit Reader is not installed. (For the EXE installation package, inputs the command-line /displayadobeindoc.)
ADVERTISE	Usually used together with "ADDLOCAL" to advertise the specified features.
LIVEPUS_DISABLE	Dock the floating Live Chat to the status bar or to the right side of the application window if the status bar is hidden with the value of "1".

Command-line Examples:

1. Silently install the application (no user interaction) to folder "C:\Program Files\Foxit Software":

```
msiexec /i "Foxit PDF Editor.msi" /quiet INSTALLLOCATION="C:\Program Files\Foxit Software "
```

2. Install the Foxit PDF Viewer only:

```
msiexec /i "Foxit PDF Editor.msi" /quiet ADDLOCAL="FX_PDFVIEWER "
```

3. Use the license key file saved in disk C to activate the application when running the setup:

```
msiexec /i "Foxit PDF Editor.msi" KEYPATH="C:\fpmkey.txt"
```

4. No installation of Foxit PDF Editor Printer:

```
msiexec /i "Foxit PDF Editor.msi" ADDLOCAL=ALL, ADVERTISE="FX_CREATOR" /qn
```

5. Force an installation to overwrite the same or higher version of Foxit PDF Editor:

```
msiexec /i "Foxit PDF Editor.msi" REMOVE_NEWVERSION="1"
```

6. Remove registry and user data when performing silent uninstallation:

```
msiexec /x "Foxit PDF Editor.msi" /quiet CLEAN="1"
```

7. Activate the application by key code:

```
msiexec /i "Foxit PDF Editor.msi" KEYCODE="your key code"
```

8. Install the application without Foxit PDF Editor Create PDF Toolbar

```
msiexec /i "Foxit PDF Editor.msi" ADDLOCAL=ALL, ADVERTISE="FX_BROWSERADDIN"
```

Deployment and Configuration

Using Group Policy

What is Group Policy?

Group Policy (GPO), a feature of the Microsoft [Windows NT](#) family of [operating systems](#), is a set of rules that control the working environment of user accounts and computer accounts. It offers the centralized management and configuration of operating systems, applications, and users' settings in an [Active Directory](#) environment.

Group Policy can configure most system settings, save power by utilizing smart power settings, give individual users more control over their machines with administrator privileges and increase system security.

This section will introduce steps to help you master how to quickly add and modify the new GPO template for configuring your installation of Foxit PDF Editor.

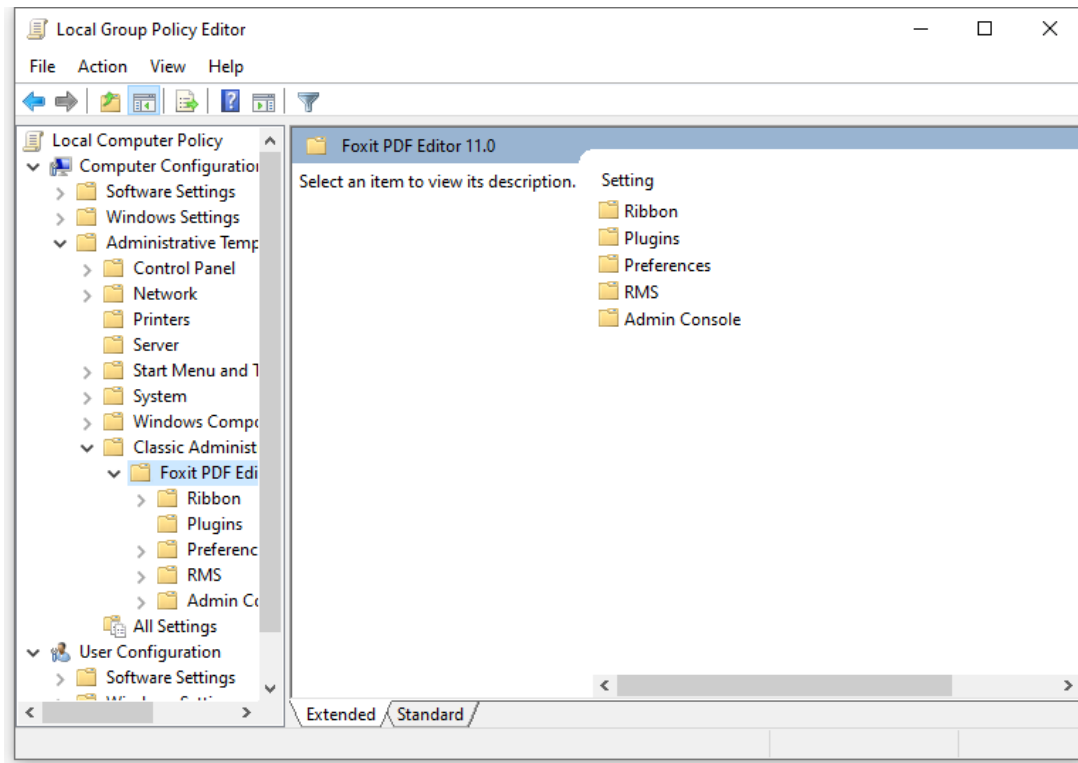
Personal Computer Setting

There are two file types of group policy template of Foxit PDF Editor: .adm and .admx. Different types are compatible with different operation systems, but have the same settings. The template of .adm file type is compatible with Windows XP and later, while .admx is compatible with Server 2008, Server 2012, Windows 8 and later.

Set Template Preference

For .adm file, follow the steps as below:

- Use the shortcut keys “Windows + R” and type gpedit.msc in the **Run** window to open Group Policy Editor.
- Right-click the management template and choose **Add/Remove Template** in the context menu. In the opened dialogue box, add the group policy template of Foxit PDF Editor. The Foxit PDF Editor template will appear in the left navigation pane and you can set its template preferences.

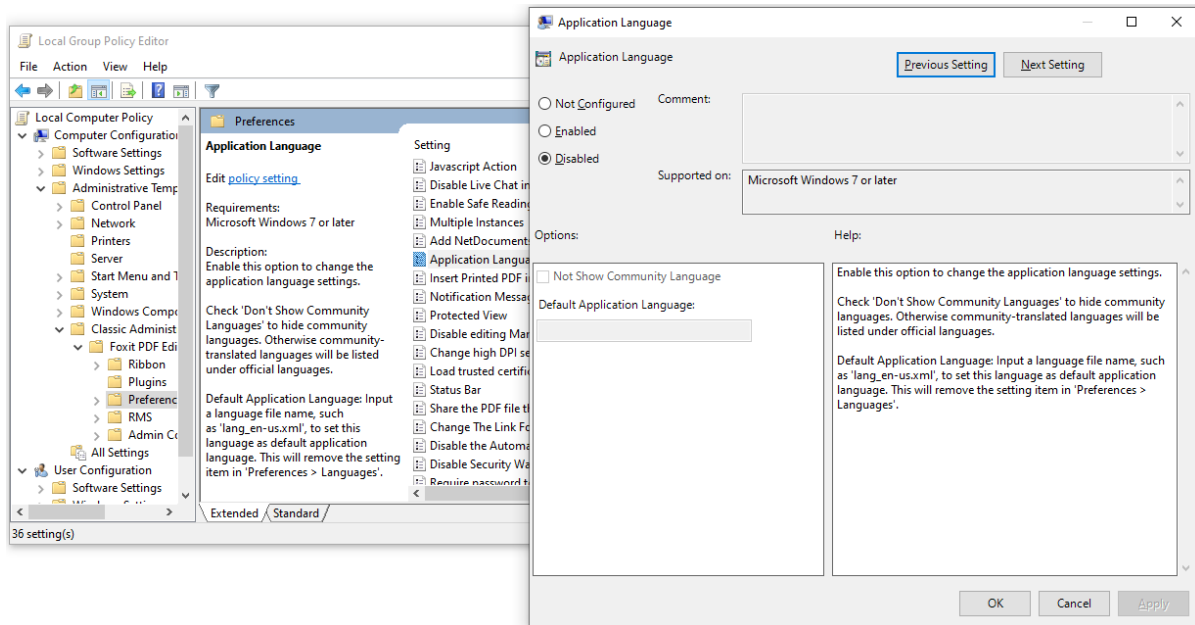


For .admx file, put the .admx file in C:\Windows\PolicyDefinitions and do the setting. The .admx file should be used in combination with an .adml file. And the .adml file should be put in C:\Windows\PolicyDefinitions\language. For example, if in the English OS, the .adml file should be put in C:\Windows\PolicyDefinitions\en_us.

Example: Not Show Community Language

- Choose **Foxit PDF Editor > Preferences > Application Language**.
- Double-click **Application Language** to open the dialog box and check the option **Enabled** and check **Not Show Community Language**. Then only the official languages will show in the **File > Preferences > Language**.
- If the option **Not Configured** or **Disabled** is checked, the languages translated by

community will be displayed.



- Other settings can be configured in the same way.

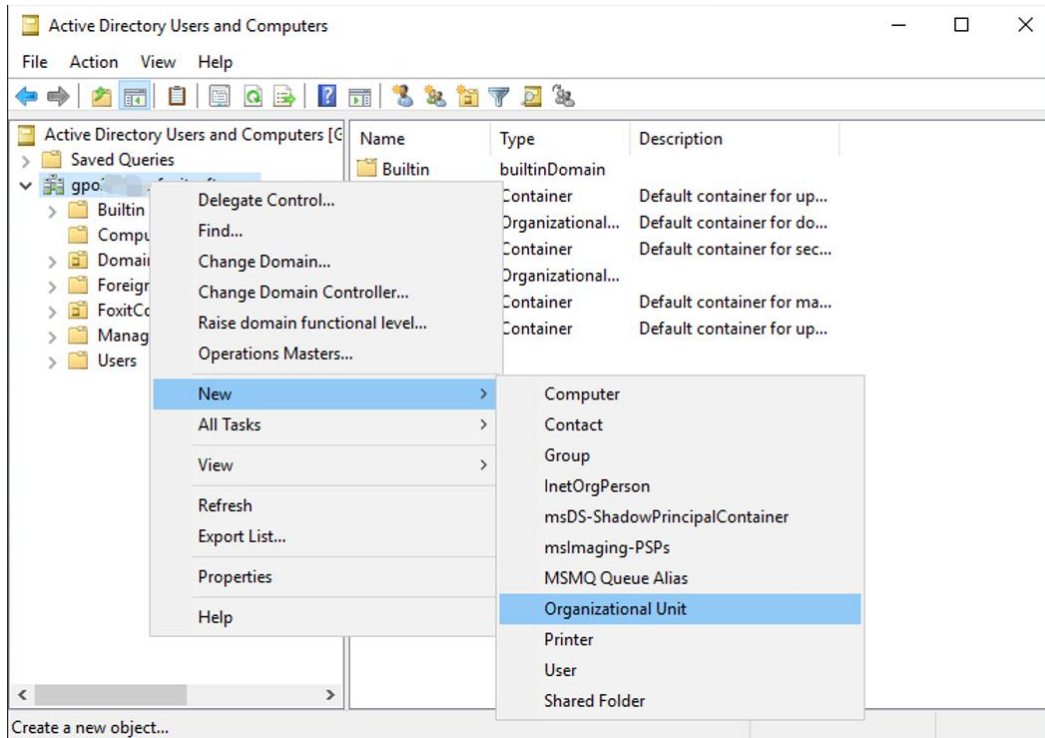
Note: Group Policy setting includes computer configuration and user configuration.

Computer configuration takes precedence over user configuration. The application will use the computer configuration if both the computer and user configure a specific function at the same time. Please note that if the option **Disabled** is a valid configuration, the setting will be shown in the help information. Otherwise, the corresponding registry entry will be removed as selecting Unconfigured. (The value of the option Disabled in the Group Policy Template of Foxit PDF Editor is invalid.) Foxit PDF Editor will retain all your configuration settings when you upgrade it to a new version.

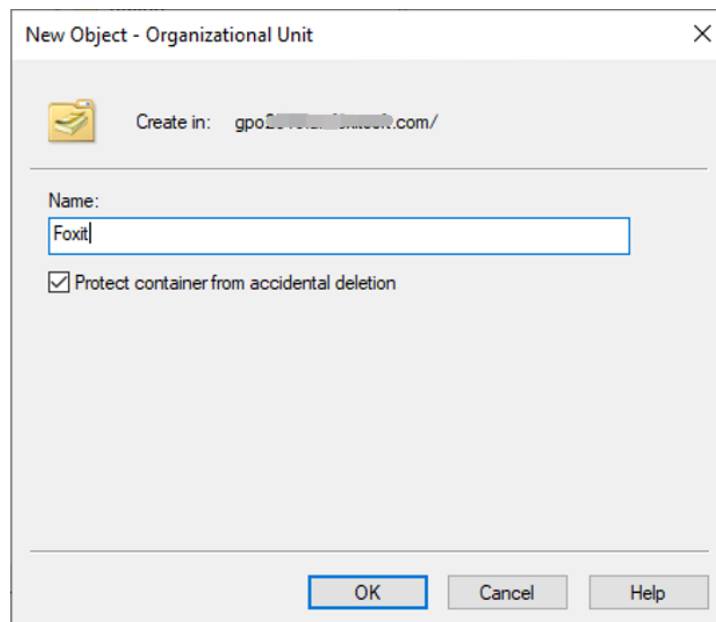
GPO Deployment (for Server)

Create GPO Management

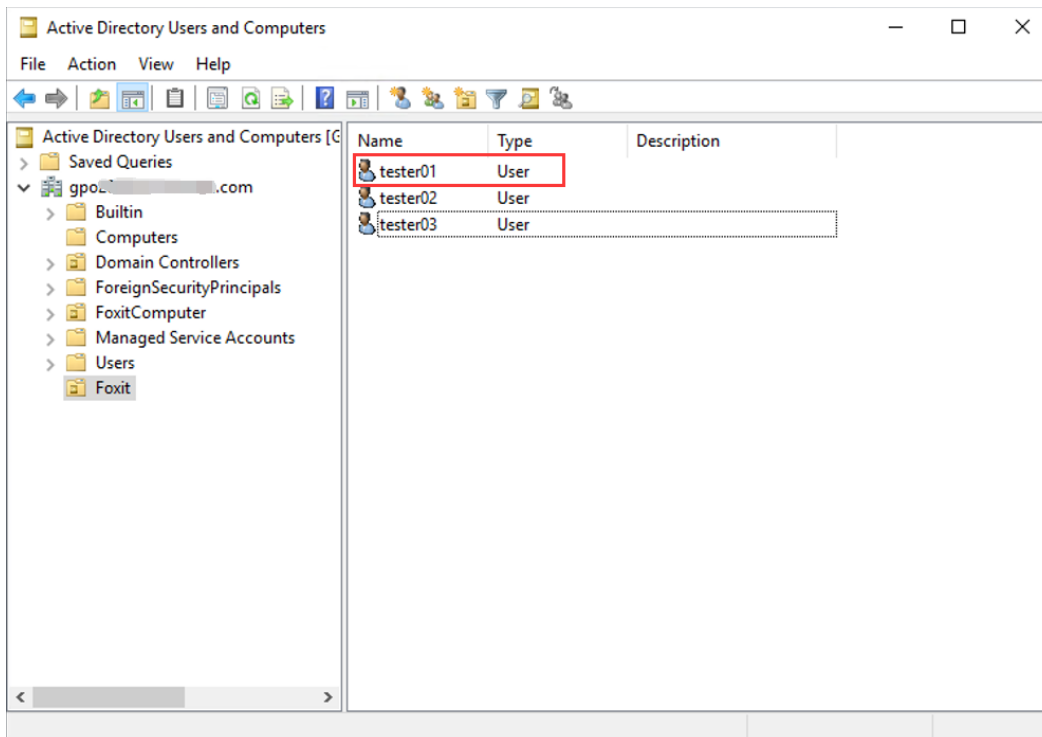
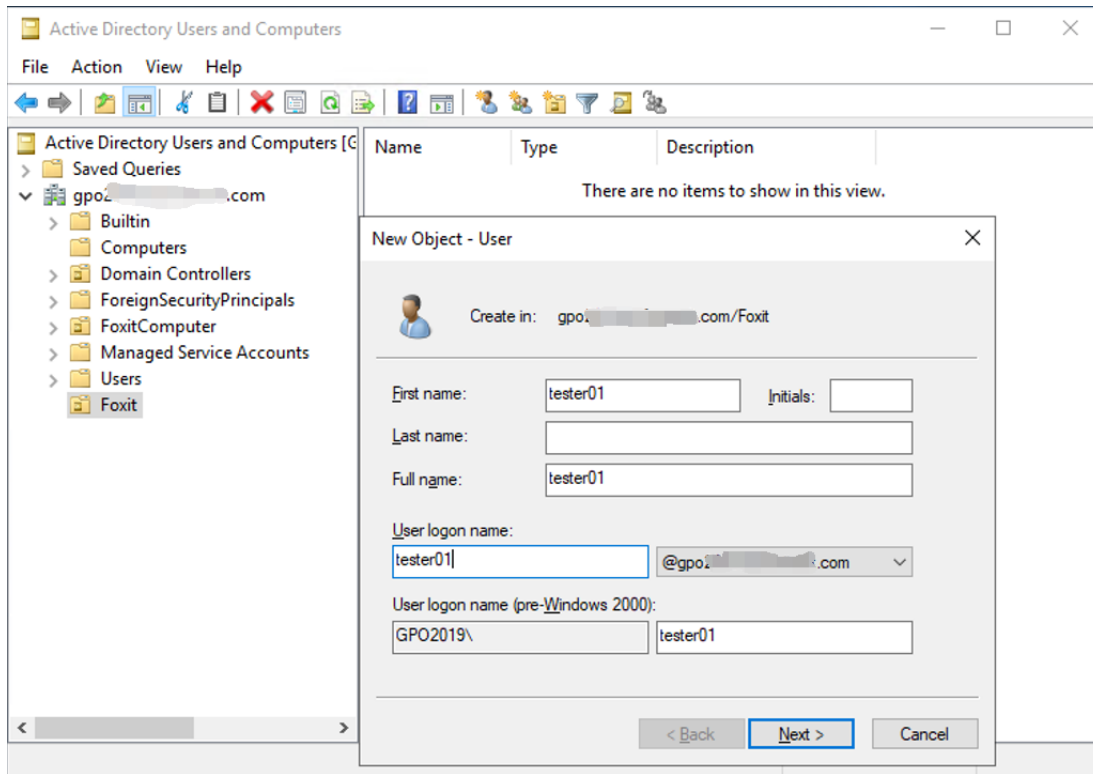
- If you already have an Active Directory domain and organizational unit configured, please skip to “Apply the Foxit Template” section.
- Choose **Start > Windows Administrative Tools** (for Windows 10) > open “Active Directory Users and Computers” > right-click your domain > choose **New > Organization Unit**.



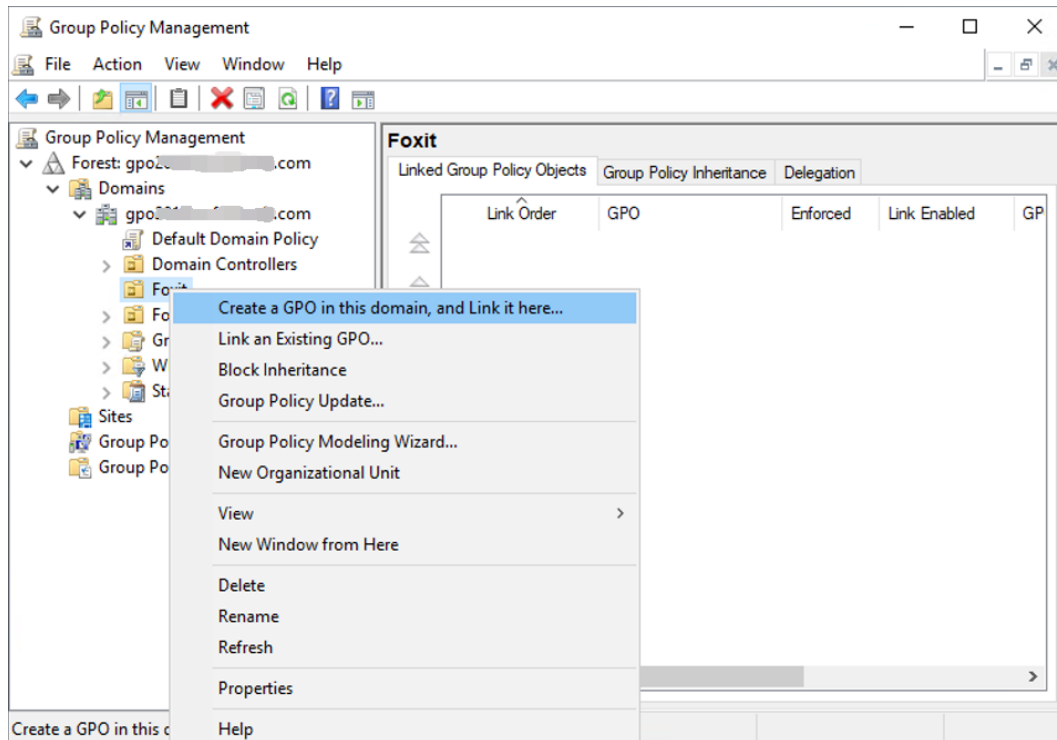
- In the opened New Object - Organization Unit dialogue box, type the unit name (For this example, we have named the unit "Foxit") and click **OK**.



- Right click the created organization unit “Foxit” and choose **New > User**. For this example, we have named the user “tester01”.



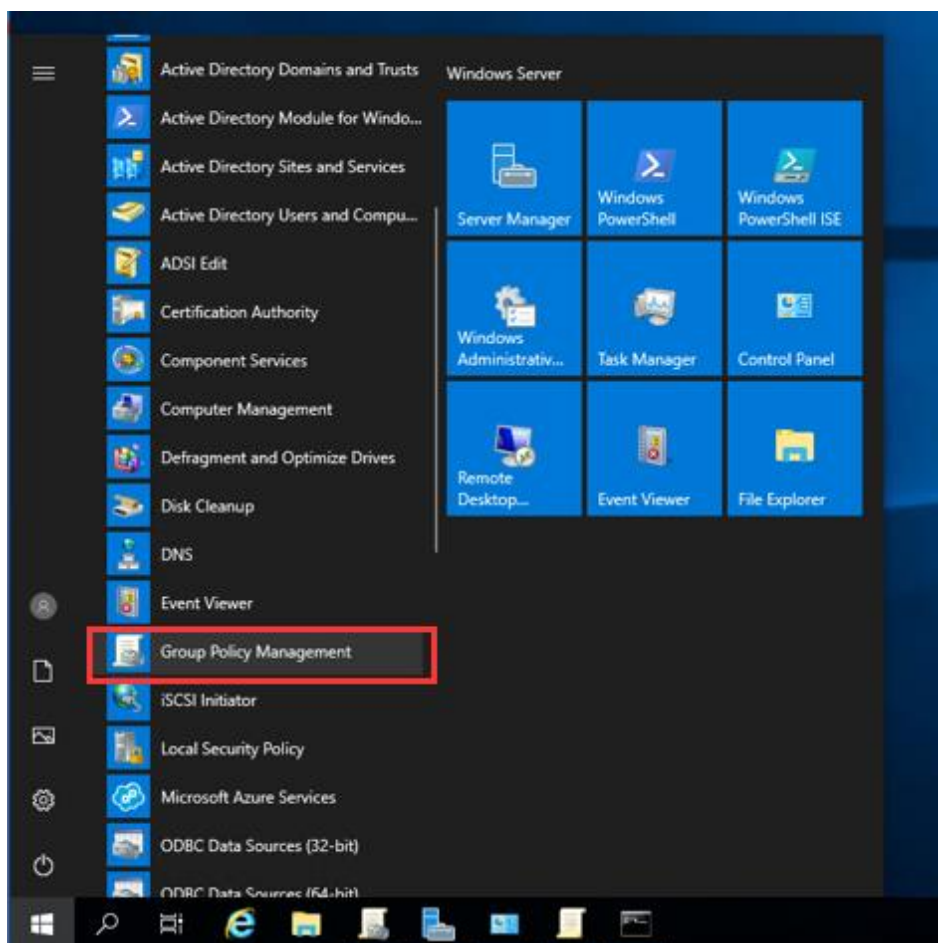
- Click **Start > Windows Administrative Tools** (for Windows 10) > open the Group Policy Management console and right-click the created organization unit "Foxit" and choose **Create a GPO in this domain, and Link it here....**



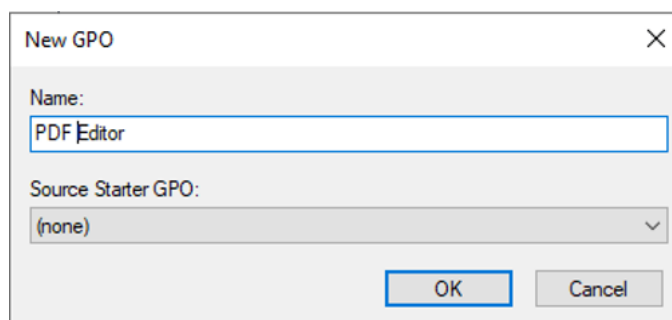
If you cannot find the Group Policy Management in Windows Administrative Tools, please install the application package GPMC.MSI. You can download the package by clicking the link <http://www.microsoft.com/en-us/download/details.aspx?id=21895>.

Tip: To deploy Foxit PDF Editor's installers or plugins across your organization through GPO, please refer to the instructions [here](#). You can also perform the deployment through [Configuration Manager](#), which was previously named System Center Configuration Manager (SCCM) and now is part of Microsoft Endpoint Manager.

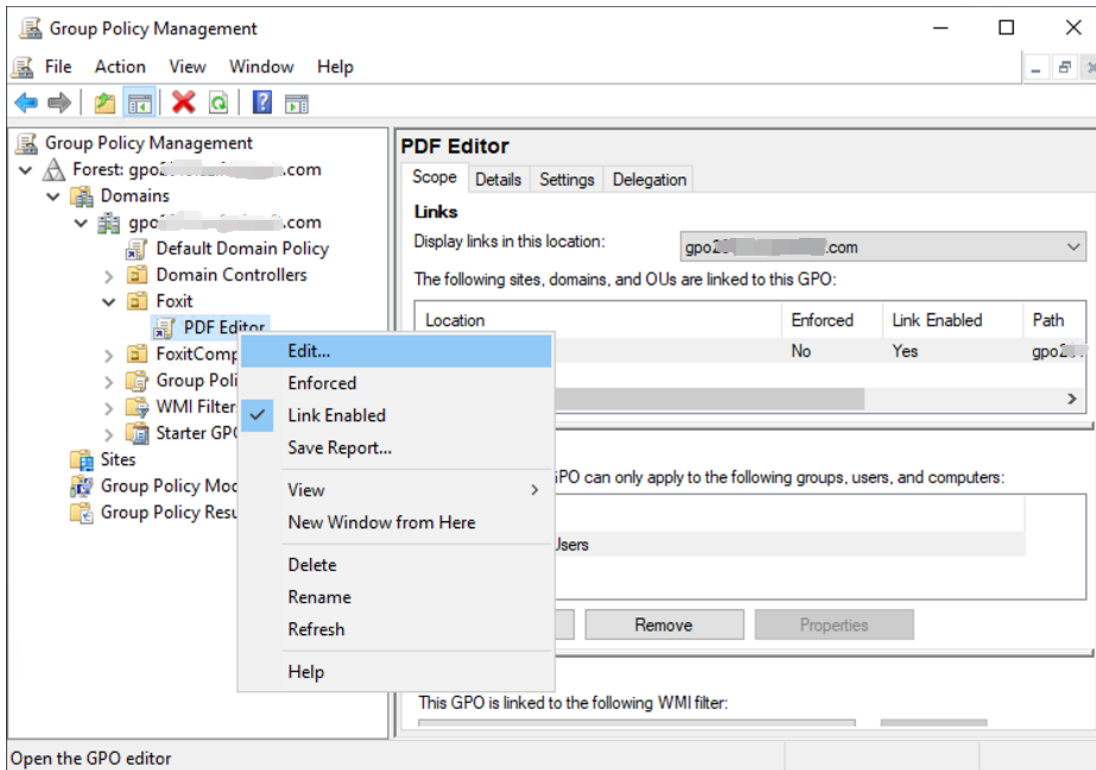
Apply the Foxit Template



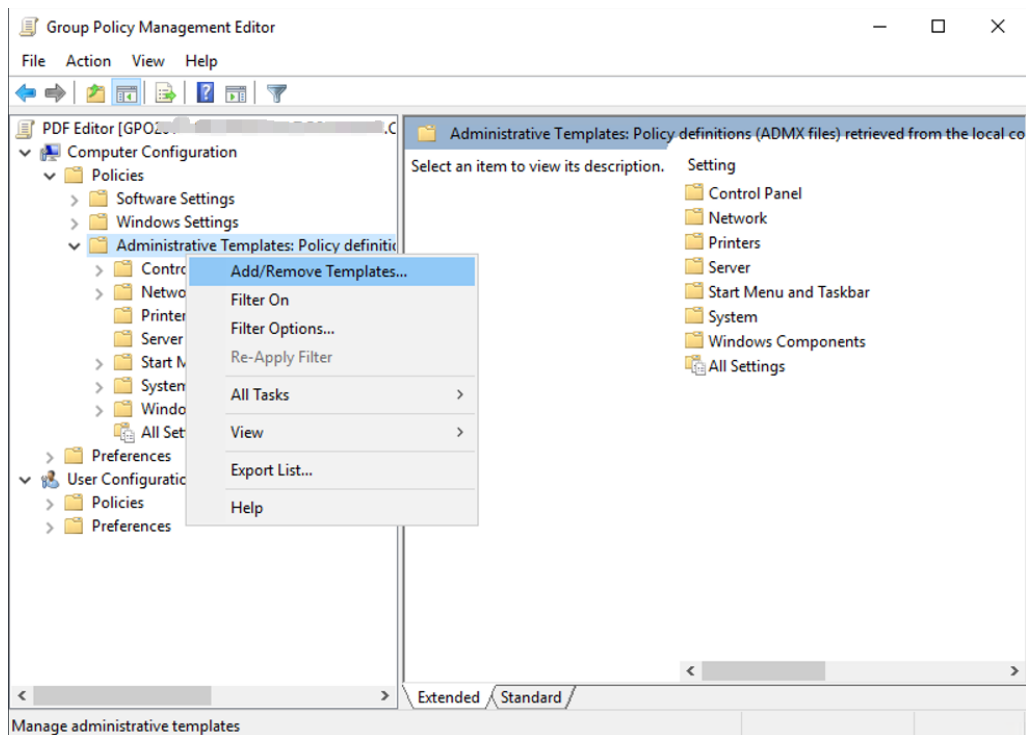
- Type the GPO name in the “New GPO” dialogue box and click **OK**.



- Right-click the new GPO and choose **Edit...** in the right-click menu to open Group Policy Editor.



- Right-click the **Administrative Templates** and choose **Add/Remove Templates...** to add Foxit PDF Editor template. Please refer to [Set Template Preference](#).



- For configuring options, please refer to [Example: Not Show Community language](#).

GPO Items

The following table introduces some simple manipulations in GPO to speed up your working process.

Items in GPO Template

Folder Path	Item	Options	Description
Foxit PDF Editor > Plugins	Remove Specific Plugins		Input the plugin name which needs to be removed. Only applications with .fpi extensions can be removed from Foxit PDF Editor.
	Remove Plugins	Updater	Remove the selected plugins.
		FoxitAccountManagement	
		Speech	
		RMSV2	
		SharePoint	
		DocuSign	
		CommentsSummary	
		ComparePDF	
		PageEditor	
		ShareReview	
		GoogleDrivePlugin	
		OneDrivePlugin	
		OneDrive For Business	
		ActionWizard	
		DropboxPlugin	
		LicenseManager	
		BoxPlugin	
		U3DBrowser	
		iManage 9	
		iManage 10	
		OpenText eDOCS DM	
		NetDocuments and Office	
		Foxit Drive	

		WIP	
		Content Suite	
		Worldox	
		Documentum	
		Egnyte	
	Configure iManage9 server URL		Configure a server URL for iManage 9/iManage 10/SharePoint/Alfresco. The changes will be synchronized to the corresponding settings under File > Open or Save As > Add a place > iManage 9/iManage 10/SharePoint/Alfresco .
	Configure iManage10 server URL		
	Configure SharePoint server URL		
	Configure Alfresco server URL		
Foxit PDF Editor > Preferences	Features which require internet connection	Itself	Enable this option to enable all the features which require internet connection. This will change the corresponding setting in Preferences > General .
		SubItem	Specify features to allow internet connection: check the items to add into a whitelist, which will be allowed to access internet even though disabling all features that require internet connection.
Foxit PDF Editor > Preferences > File Association	Disable default PDF viewer switching		Enable this option to disable the ability to change the specified default handler (PDF viewer).
	Default PDF	Web Browser PDF Viewer	Allow you to set Foxit

	Viewer	System PDF Viewer	PDF Editor as the default PDF viewer in your Windows system, web browsers, the thumbnail view and preview pane in Windows Explorer, as well as in MS documents that contain embedded PDFs.
		Preview PDF Viewer	
		Thumbnail PDF Viewer	This setting requires Administrator permission. In a domain environment, if the client doesn't have the Administrator permission, there will be a UAC prompt after the boot.
		Embedded MS Documents Viewer	
	Forbid Checking of Default PDF Viewer		Hide the 'Set to Default PDF Reader' dialog when Foxit PDF Editor isn't the default PDF viewer.
Foxit PDF Editor > Preferences	'About Foxit PDF Editor' Dialog	Copyright	Set the new contents in 'About Foxit PDF Editor' dialog.
		Copyright Content	
		BackGroundPath	
Foxit PDF Editor > Preferences	Configure communication port range for Foxit creator		<p>This setting is used for configuring the communication port range for Foxit creator.</p> <p>If enabled, the maximum and minimum values you typed will take effect. The valid port range</p>

			<p>is "1024-65535".</p> <p>Note: we recommend setting an appropriate port range based on the number of clients in an environment. For a single client, the maximum and minimum value difference should be no less than 10 to ensure that creator related functions could run smoothly.</p> <p>If disabled or not configured, the default value "50000 - 60000" will take effect.</p>
Foxit PDF Editor > Preferences	Program Name	Program Name	Change the program's name. The default is 'Foxit PDF Editor'.
Foxit PDF Editor > Preferences	Show Start Page		Change the settings of Start Page.
Foxit PDF Editor > Preferences	Enable Safe Reading Mode		Change the settings of Safe Reading Mode.
Foxit PDF Editor > Preferences	Multiple Instances		Enable this option to allow multiple instances. Disable this option to not allow multiple instances. This will change the corresponding setting in Preferences > Documents .
Foxit PDF Editor > Preferences	Add NetDocuments		Enable this option to add NetDocuments

	to the open List		to the File > Open List. Users cannot remove this option from their end.
Foxit PDF Editor > Preferences	Application Language	Not Show Community Language	Change the application language settings. This will change the setting item in Preferences > Languages .
		Default Application Language	
Foxit PDF Editor > Preferences	Insert Printed PDF into Previously Generated PDF		Check the option to append the converted PDF files to the previous one when creating PDFs with Foxit PDF Editor Printer. For example, you have created a PDF with Foxit PDF Editor Printer and have not closed it after the creation. And then you create another PDF with Foxit PDF Editor Printer. The newly created PDF will be appended to the previous one automatically.
Foxit PDF Editor > Preferences	Status Bar	Setting (Auto-hide Status Bar, Hide Status Bar, or Show Status Bar)	Change the settings of Status Bar.
Foxit PDF Editor > Preferences	Notification Messages		Enable this option and choose how to deal with the different notification messages. If you unchecked all the options, the notification messages will never be shown. This will

			change the corresponding setting in Preferences > General.
Foxit PDF Editor > Preferences	Share the PDF file that caused crash		Enable this option to always share the PDF file that caused crash. This will change the corresponding setting of 'Share the PDF file that caused this crash' option in Crash Report.
Foxit PDF Editor > Preferences	Change The Link For User Manual	UserManualPath	Enable this option to change the link of User Manual to the local link you want.
Foxit PDF Editor > Preferences	Disable the Automatically Update		With this option enabled, the automatic update will be disabled.
Foxit PDF Editor > Preferences	Disable Security Warning		Enable this option to disable the security warning when Foxit PDF Editor is launched by a third-party application without a valid digital signature.
Foxit PDF Editor > Preferences	Lock Read Mode in web browsers		Enable this option to use Read Mode by default in Foxit PDF Editor browser plugins, and disallow users from exiting this mode. This will change the corresponding setting in Preferences > Documents > Open Settings.

Foxit PDF Editor > Preferences	Filter Comments by the original author only		Enable this option to filter comments by the original author only. This will change the corresponding setting in Comment > Filter window.
Foxit PDF Editor > Preferences	User Experience Improvement		Enable this option to allow anonymous data collection. This will change the corresponding setting in Preferences > General .
Foxit PDF Editor > Preferences	Hide Activation Code		Enable this option to hide activation code in the application.
Foxit PDF Editor > Preferences	Use GDI+ Output for all types of printer		Enable this option to use GDI+ output for PS driver printers (excluding PCL driver printer). This will change the corresponding setting in Preferences > Print .
Foxit PDF Editor > Preferences	Trusted Applications		<p>Enable this option and input the name of the trusted application in the list. The listed application will be added in the Trusted Apps in Preferences > Trust Manager settings.</p> <p>If you disable this option, the corresponding setting will be unavailable in</p>

			Preferences > Trust Manager in Foxit PDF Editor.
Foxit PDF Editor > Preferences	Protected View		Enable this option to turn on protected view in order to protect your computers from being harmed by files originated from potentially unsafe locations. This will change the setting in Preferences > Security > Protected View .
Foxit PDF Editor > Preferences	Require password to use signatures		Enable this option to require users to set a password for the signature while creating a new signature. This will change the setting of 'Require password to use this signature' in the Create Signature dialog box which pops up when you sign a PDF using the Fill & Sign feature.
Foxit PDF Editor > Preferences	Disable Foxit eSign service		Choose "Enabled" to disable Foxit eSign service. Choose "Disabled" to enable Foxit eSign service. This will change the setting of "Disable Foxit eSign service" in Preferences > PDF Sign > Foxit eSign.

Foxit PDF Editor > Preferences	Change high DPI settings		<p>Enable this option to specify the display settings for PDF Editor when using a high-DPI device.</p> <p>Choose "Application" to render correctly whenever the DPI of the display that they are running on changes.</p> <p>Choose "System" to automatically being DPI scaled by Windows.</p> <p>Choose "System(Enhanced)" to render correctly at a single display scale factor and become blurry whenever the DPI changes.</p>
Foxit PDF Editor > Preferences	Load trusted certificates from Foxit server		<p>This setting specifies the way to load "trusted certificates from Foxit server".</p> <p>If this setting is enabled, three options will be available: (1) "Disable": Don't load trusted certificates from Foxit server. (2) "Enable & Ask before updating": Load trusted certificates from Foxit server but will ask before updating. (3) "Enable & Install silently": Load trusted</p>

			<p>certificates from Foxit server but will install silently.</p> <p>This will change the setting in Preferences > Trust Manager >Automatic Foxit Approved Trust List Updates.</p> <p>If this setting is disabled or not configured, the default will take effect.</p>
Foxit PDF Editor > Preferences	Show TELL ME WHAT YOU WANT TO DO		<p>Enable/disable this option to show/hide the TELL ME WHAT YOU WANT TO DO box on the ribbon.</p>
Foxit PDF Editor > Preferences	Change the Support Tools in Start Page		<p>Enable this option to change the Support Tools in Start Page.</p>
Foxit PDF Editor > Preferences	The Tutorials URL		<p>Enable this option to change the tutorials URL in the Video Tutorials tab in the Start page.</p>
Foxit PDF Editor > Preferences	Lock the Auto-Complete in Form Filling		<p>Enable this option to lock the Auto-Complete feature and disable the corresponding setting in Preferences > Forms.</p>
Foxit PDF Editor > Preferences	Disable Privileged Locations		<p>Enable this option to disable and lock the end user's ability to add files, folders, and hosts as privileged locations that can be</p>

			exempted from enhanced security restrictions.
Foxit PDF Editor > Preferences	Do not use QuickTime Player for multimedia items		Enable this option to disable using QuickTime Player for multimedia items.
Foxit PDF Editor > Preferences	Enable creating self signed digital IDs		Disable this option to forbid the end user's ability to select Create a new Digital ID option in Add ID workflows.
Foxit PDF Editor > Preferences	Javascript Action		<p>Enable/disable this option to allow/disallow running JavaScript in PDF files.</p> <p>This will change the corresponding setting in Preferences > JavaScript > Enable JavaScript Action.</p>
Foxit PDF Editor > Preferences	Disable Live Chat in the Application		Enable/disable this option to hide/show Live Chat in the application.
Foxit PDF Editor > Preferences	Disable editing Manage Sites		<p>Enable this option to disable and lock the end user's ability to specify the default behavior for accessing the Internet from PDFs.</p> <p>Choose "Always ask" to ask before opening every URL.</p> <p>Choose "Allow access" to allow</p>

			<p>access to all URLs.</p> <p>Choose "Block access" to restrict access to all URLs.</p>
Foxit PDF Editor > Preferences	Outlook COM add-in	View PDF Results	<p>Enable 'View PDF Results' to view the generated PDF file in Foxit PDF Editor after creation.</p> <p>Enable 'Output PDF Portfolio' to create a single PDF file containing all emails in a "portfolio".</p> <p>Enable 'Include Attachments' to include all email attachments in the generated PDF.</p>
		Output PDF Portfolio	
		Include Attachments	
Foxit PDF Editor > Ribbon	TabElements (the button items in Quick Access Toolbar and the top right corner of the application window)		Hide the selected button items in Ribbon Mode.
	RibbonCategory (the button items in each tab)		
Foxit PDF Editor > RMS > Preferences	Encrypt Metadata		Encrypt document metadata. This disables the setting in 'Preferences > RMS Setting'.

	Add 'protected' to the name of encrypted files		Append "(protected)" to the end of the file name of encrypted files.
	Save As		Turn on the Save As feature for AIP-protected files.
	Microsoft IRM Protection		Enable this option to choose Microsoft IRM Protection Version for document encryption. If not enabled, Microsoft IRM Protection Version 2(PPDF) is used.
	RMS Interoperability		Enable this option, all encrypted PDF will conform to Microsoft IRM Protection for PDF Specification and hence be able to be decrypted by other RMS Viewer.
Foxit PDF Editor > Admin Console	Update Server		Set the path of Internal update server.
	Admin Console Server		Set the path of your Admin Console Server. The end users can use this server URL to connect to your enterprise Admin Console Server.

Using Foxit Customization Wizard

Foxit Customization Wizard (hereafter, "the Wizard") is a configuration utility for customizing (configuring) the Foxit PDF Editor or Foxit PDF Reader installer before large scale deployment. For example, you can license the product on a volume scale with the Wizard so that you do not need to register and personalize each copy of the installation. Foxit PDF Editor or Reader will retain all your configuration settings when you upgrade it to a new version.

The Wizard allows enterprise IT administrators to do the following:

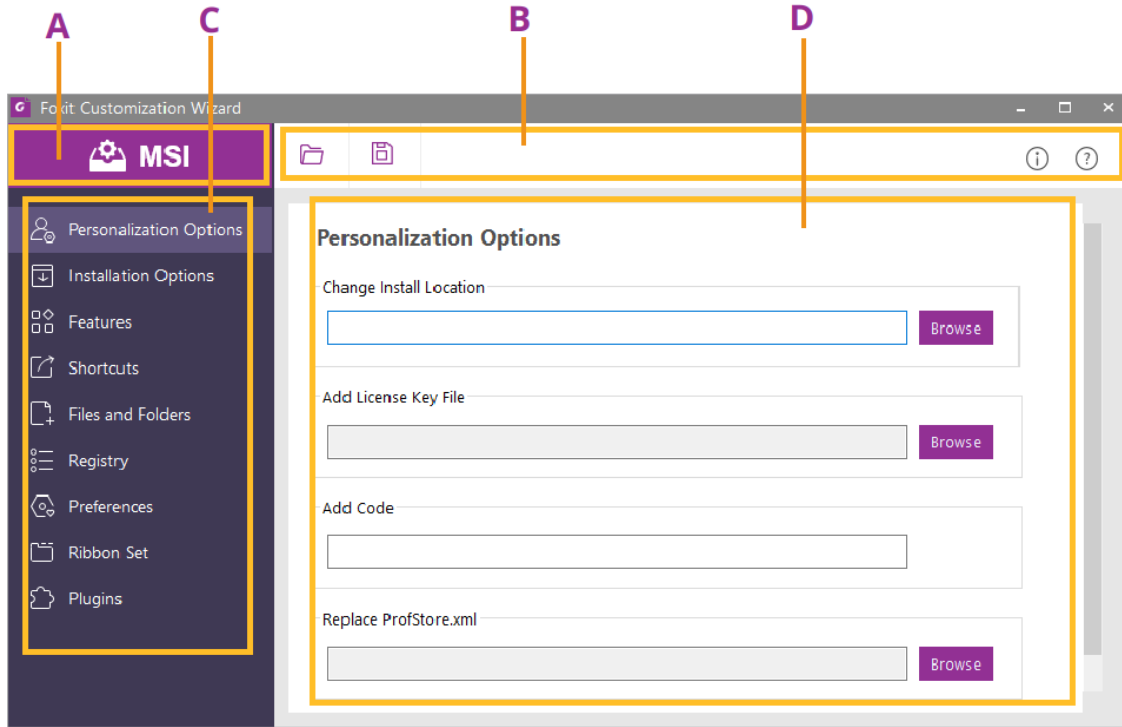
- Modify an existing MSI package and save all the modifications into a transform file (.mst).
- Directly configure settings from scratch and save all the configurations as an XML (.xml) file.
- Customize settings based on an existing XML (.xml) file.
- Configure which digital ID files are allowed to use.

Get started

Run the Wizard, you will see the following options on the Welcome page:

- MSI
- XML Editor for Foxit PDF Editor
- XML Editor for Foxit PDF Reader
- SignITMgr


Please select one option to begin. Take **MSI** for example. After you open an MSI installer, you will see the Wizard workspace below.



A. Title Bar B. Menu Bar C. The Navigation bar D. The main work area

The workspace is made up of four parts: Title Bar, the top Menu bar, the Navigation bar, and the main work area.

1. The **Title bar** in the top left corner shows the corresponding option you choose on the Welcome page.
2. The top **Menu bar** provides key menu options, like "Open", "Save", "Information", and "About".
3. The left-hand **Navigation bar** links to the specific configurable options.
4. The **Main Work Area** displays configurable options according to the configuration settings you choose.

For more detailed instructions, please click the  icon on the top Menu bar and choose **User Guide**, which covers all features included in Foxit Customization Wizard.

Contact Us

Feel free to contact us should you need any information or have any problems with our products. We are always here, ready to serve you better.

- *Office Address:*
Foxit Software Incorporated
41841 Albrae Street
Fremont, CA 94538
USA
- *Sales:*
1-866-680-3668
- *Support & General:*
1-866-MYFOXIT, 1-866-693-6948, or 1-510-438-9090
- *Fax:*
1-510-405-9288
- *Website:*
www.foxit.com
- *E-mail:*
Sales - sales@foxit.com
Marketing - marketing@foxit.com
Technical Support - enter a trouble ticket via our [Support Portal](#)
Customer Service Feedback - feedback@foxit.com