

Foxit PDF Secure RMS Protector

(SharePoint Extensions)

User Manual

© 2011 Foxit Corporation

All rights reserved.

Copyright © 2011 Foxit Corporation. All Rights Reserved.

No part of this document can be reproduced, transferred, distributed or stored in any format without the prior written permission of Foxit.

Anti-Grain Geometry - Version 1.1

Copyright (C) 2002-2005 Maxim Shemanarev
(<http://www.antigrain.com>)

Permission to copy, use, modify, sell and distribute this software is granted provided this copyright notice appears in all copies. This software is provided "as is" without express or implied warranty, and with no claim as to its suitability for any purpose.

Contents

Chapter 1 - Overview.....	5
Chapter 2 - Getting Started	6
System Requirements for MOSS 2007.....	6
System Requirements for MOSS 2010.....	6
Corresponding permissions of Foxit PDF Secure RMS Reader and MOSS..	7
Installing Foxit PDF Secure RMS Protector on a SharePoint Server	7
Uninstalling Foxit PDF Secure RMS Protector.....	11
Check the version of Foxit PDF Secure RMS Protector.....	12
Chapter 3 - Configuring AD RMS to Work with SPS-SRV	13
For MOSS 2007	13
To add SPS-SRV to Local Intranet	13
To add SPS-SRV to the AD·RMS Certification Pipeline	13
To activate Information Rights Management in Office SharePoint Server 2007.....	14
To restrict permissions using AD·RMS	14
For MOSS 2010	14
To add SPS-SRV to Local Intranet	14
To add SPS-SRV to the AD·RMS Certification Pipeline	15
To activate Information Rights Management in Office SharePoint Server 2010.....	15
To restrict permissions using AD·RMS	16
Chapter 4 - Working with Foxit PDF Secure RMS Protector.	17
For MOSS 2007	17
To add the domain user to SharePoint site	17
To set the group permission in SharePoint site.....	17
To restrict the print permissions using RMS	19
For MOSS 2010	21
To add the domain user to SharePoint site	21
To set group permission in SharePoint site	22
To restrict the print permissions using RMS	24
Chapter 5 - For Exchange 2010	27
Getting Started	27
System requirements	27
Corresponding permissions of Foxit PDF Secure RMS Reader and Exchange	27
Installing Foxit PDF Secure RMS Protector on an Exchange Server ...	27
Uninstalling Foxit PDF Secure RMS Protector.....	29
Check the version of Foxit PDF Secure RMS Protector.....	30
Configuring AD·RMS to Integrate with Exchange Server 2010 in a Single Forest	31

To register a service connection point	31
To give Exchange servers permissions to access the server certification pipeline	32
To set up the Exchange Server super users group	33
To set InternalLicensingEnable true by ExchangeManagement Shell .	33
Working with Foxit PDF Secure RMS Protector.....	34
Chapter 6 - FAQ	38
Contact Us	39

Chapter 1 - Overview

Traditionally, sensitive information can only be controlled by limiting access to the networks or computers where the information is stored. After access is given to users, however, there are no restrictions on what can be done with the content or to whom it can be sent. Microsoft Information Rights Management (IRM) enables you to create a persistent set of access controls that live with the content, rather than a specific network location, which will help you control access to files even after they leave your direct control.

Foxit PDF Secure RMS protector extends all the benefits of AD RMS to any PDF document. In addition, Foxit PDF Secure RMS protector provides creation and control of rights to unique PDF features.

Microsoft's Active Directory Rights Management (AD • RMS) solves security problems for enterprise documents created in Microsoft Office. With the inclusion of AD RMS in Windows Server2008, AD RMS has quickly become the default standard for document rights protection.

For the enterprises, they can enforce security policies easily to protect sensitive information, as well as enable each PDF document with additional features such as forms fill out and annotations.

Chapter 2 - Getting Started

This section provides system requirements, install and uninstall instructions for the RMS Protector.

System Requirements for MOSS 2007

Computer	Operating System	Requirement
RMS Server/ ADRMS Server	Windows Server •2003 with Service Pack • 1 (SP1)/Windows Server • 2008 with Service Pack • 1 (SP1)	RMS, Internet Information Services (IIS) 6.0, World Wide Web Publishing Service, Message Queuing (also known as MSMQ), and Microsoft SQL Server™ • 2005 Standard Edition
DC	Windows Server •2003 with SP1	Active Directory, Domain Name System (DNS)
ADRMS-DB	Windows • Server • 2003 with SP1	Microsoft SQL Server™ • 2005 with Service Pack • 2 (SP2)
SharePoint Server Such as named SPS-SRV	Windows Server •2003 with SP1	Office SharePoint Server • 2007 with RMS Client installed, and has been added this Server to DC

System Requirements for MOSS 2010

Computer	Operating System	Requirement
ADRMS Server	Windows Server •2008 with Service Pack • 1 (SP1)	RMS, Internet Information Services (IIS) 6.0, World Wide Web Publishing Service, Message Queuing (also known as MSMQ)
DC	Windows Server •2003 with SP1	Active Directory, Domain Name System (DNS)
ADRMS-DB	Windows • Server • 2008 with SP1	Microsoft SQL Server™ • 2008 R2
SharePoint Server Such as named SPS-SRV	Windows Server •2008 with SP2	Office SharePoint Server • 2010 and has been added this Server to DC

Corresponding permissions of Foxit PDF Secure RMS Reader and MOSS

SharePoint service provides three levels rights: Full control, Change, and Read.

Level	Rights of Foxit PDF Secure RMS Reader
Full control	View, Copy, Modify, Print, View Data, Access, Annotate, Fill Form, Assemble
Change	View, Copy, Modify, Access, Annotate, Fill Form, Assemble
Read	View

The user only can print the document if its library IRM settings have been configured to allow document printing.

Installing Foxit PDF Secure RMS Protector on a SharePoint Server

To install Foxit PDF Secure RMS Protector:

- Stop the IIS Admin service: Start > Settings > Control Panel > Administrator Tools > Services > IIS Admin Service > Stop. Then Close the window.
- Run the Foxit PDF Secure RMS Protector Setup program to install the protector on the server.



- Download PDF icon from <http://www.foxitsoftware.com/pdf/ifilter/pdficon.gif>.
- For MOSS 2007,
 1. copy the downloaded.GIF file to "Drive:\Program Files\Common Files\Microsoft Shared\Web Server Extensions\12\Template\Images".
 2. Edit the file "Drive:\Program Files\Common Files\Microsoft Shared\Web server extensions\12\Template\Xml\DOCICON.XML":
 - a. Right-click DOCICON.XML file > click Open With > select Notepad.
 - b. Add an entry for the .pdf extension as the file's name. For example, type the ICPDF as the name of the .gif file:
<Mapping Key="pdf" Value="pdficon.gif"/>

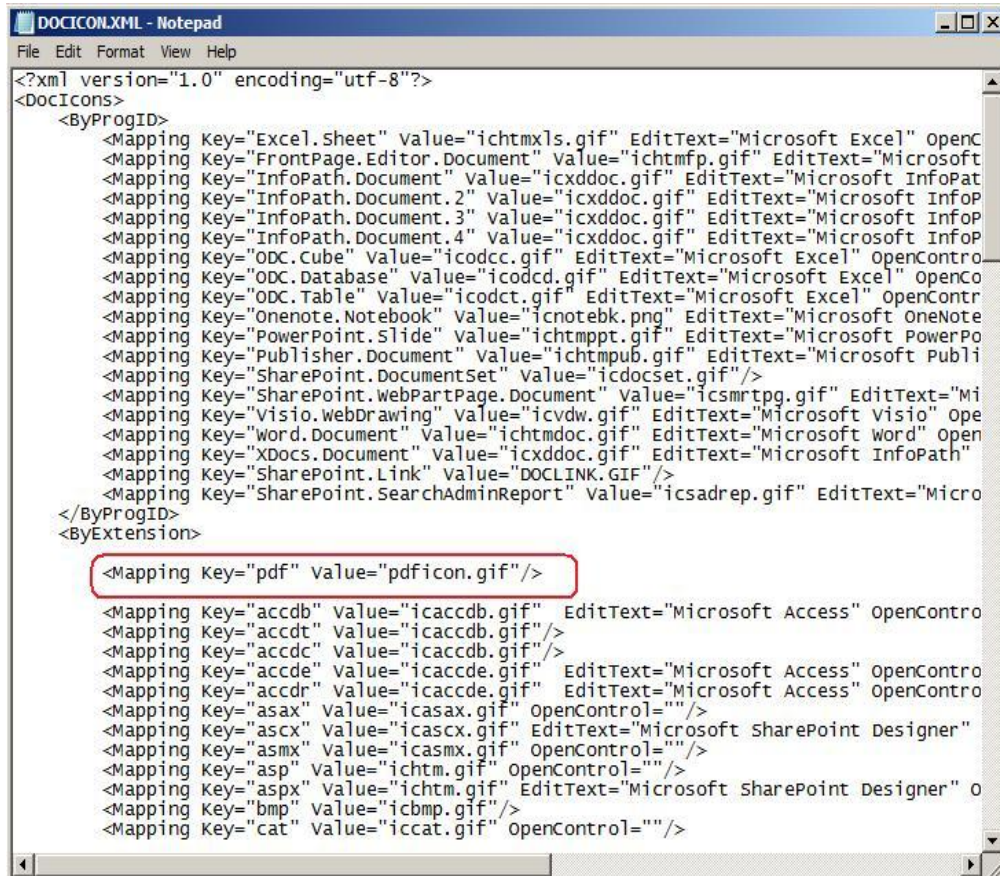

```

DOCICON.XML - Notepad
File Edit Format View Help
<?xml version="1.0" encoding="utf-8"?>
<DocIcons>
  <ByProgID>
    <Mapping Key="Excel.Sheet" Value="ichtmxls.gif" EditText="Microsoft Excel" OpenC
    <Mapping Key="FrontPage.Editor.Document" Value="ichtmfp.gif" EditText="Microsoft
    <Mapping Key="InfoPath.Document" Value="icxddoc.gif" EditText="Microsoft InfoPat
    <Mapping Key="InfoPath.Document.2" Value="icxddoc.gif" EditText="Microsoft InfoP
    <Mapping Key="InfoPath.Document.3" Value="icxddoc.gif" EditText="Microsoft InfoP
    <Mapping Key="InfoPath.Document.4" Value="icxddoc.gif" EditText="Microsoft InfoP
    <Mapping Key="ODC.Cube" Value="icodcc.gif" EditText="Microsoft Excel" OpenContro
    <Mapping Key="ODC.Database" Value="icodcd.gif" EditText="Microsoft Excel" OpenCo
    <Mapping Key="ODC.Table" Value="icodct.gif" EditText="Microsoft Excel" OpenContr
    <Mapping Key="Onenote.Notebook" Value="icnotebk.png" EditText="Microsoft OneNote
    <Mapping Key="PowerPoint.Slide" Value="ichtmppt.gif" EditText="Microsoft PowerPo
    <Mapping Key="Publisher.Document" Value="ichtmpub.gif" EditText="Microsoft Publi
    <Mapping Key="SharePoint.DocumentSet" Value="icdocset.gif"/>
    <Mapping Key="SharePoint.WebPartPage.Document" Value="icsmrtpg.gif" EditText="Mi
    <Mapping Key="Visio.WebDrawing" Value="icvdw.gif" EditText="Microsoft Visio" Ope
    <Mapping Key="Word.Document" Value="ichtmdoc.gif" EditText="Microsoft Word" Open
    <Mapping Key="XDocs.Document" Value="icxddoc.gif" EditText="Microsoft InfoPath"
    <Mapping Key="SharePoint.Link" Value="DOCLINK.GIF"/>
    <Mapping Key="SharePoint.SearchAdminReport" Value="icsadrep.gif" EditText="Micro
  </ByProgID>
  <ByExtension>
    <Mapping key="pdf" value="pdficon.gif"/>
    <Mapping Key="accdb" Value="icaccdb.gif" EditText="Microsoft Access" OpenContro
    <Mapping Key="accdt" Value="icaccdb.gif"/>
    <Mapping Key="accdc" Value="icaccdb.gif"/>
    <Mapping Key="accde" Value="icaccde.gif" EditText="Microsoft Access" OpenContro
    <Mapping Key="accdr" Value="icaccde.gif" EditText="Microsoft Access" OpenContro
    <Mapping Key="asax" Value="icasax.gif" OpenControl=""/>
    <Mapping Key="ascx" Value="icascx.gif" EditText="Microsoft SharePoint Designer"
    <Mapping Key="asmx" Value="icasmx.gif" OpenControl=""/>
    <Mapping Key="asp" Value="ichtm.gif" OpenControl=""/>
    <Mapping Key="aspx" Value="ichtm.gif" EditText="Microsoft SharePoint Designer" o
    <Mapping Key="bmp" Value="icbmp.gif"/>
    <Mapping Key="cat" Value="iccat.gif" OpenControl=""/>
  </ByExtension>

```

c. Click Save on the File menu, and then quit Notepad.

- For MOSS 2010,
 1. copy the downloaded.GIF file to "Drive:\Program Files\Common Files\Microsoft Shared\Web Server Extensions\14\Template\Images"
 2. Edit the file "Drive:\Program Files\Common Files\Microsoft Shared\Web server extensions\14\Template\Xml\DOCICON.XML":
 - a. Right-click DOCICON.XML file > click Open With > select Notepad.
 - b. Add an entry for the .pdf extension as the file's name. For example, type the ICPDF as the name of the .gif file:
 <Mapping Key="pdf" Value="pdficon.gif"/>



```

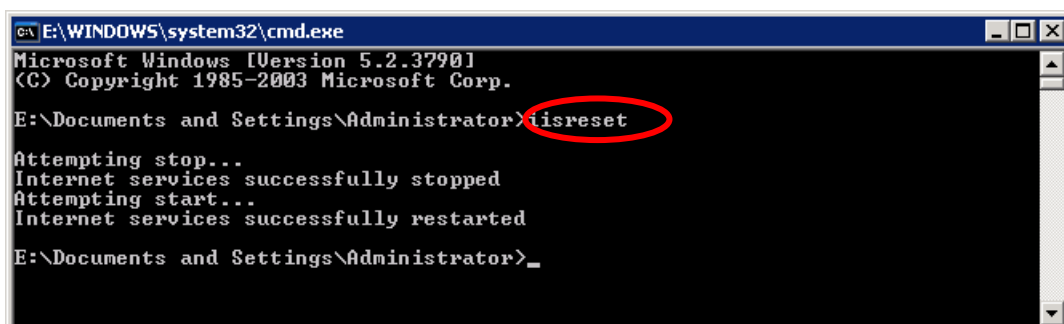
DOCICON.XML - Notepad
File Edit Format View Help
<?xml version="1.0" encoding="utf-8"?>
<DocIcons>
  <ByProgID>
    <Mapping Key="Excel.Sheet" value="ichtmxls.gif" EditText="Microsoft Excel" openC
    <Mapping Key="FrontPage.Editor.Document" value="ichtmp.gif" EditText="Microsoft
    <Mapping Key="InfoPath.Document" value="icxddoc.gif" EditText="Microsoft InfoPat
    <Mapping Key="InfoPath.Document.2" value="icxddoc.gif" EditText="Microsoft InfoP
    <Mapping Key="InfoPath.Document.3" value="icxddoc.gif" EditText="Microsoft InfoP
    <Mapping Key="InfoPath.Document.4" value="icxddoc.gif" EditText="Microsoft InfoP
    <Mapping Key="ODC.Cube" value="icodcc.gif" EditText="Microsoft Excel" OpenContro
    <Mapping Key="ODC.Database" value="icodcd.gif" EditText="Microsoft Excel" openCo
    <Mapping Key="ODC.Table" value="icodct.gif" EditText="Microsoft Excel" OpenContr
    <Mapping Key="Onenote.Notebook" value="icnotebk.png" EditText="Microsoft OneNote
    <Mapping Key="PowerPoint.Slide" value="ichtmpt.gif" EditText="Microsoft PowerPo
    <Mapping Key="Publisher.Document" value="ichtmpub.gif" EditText="Microsoft Publi
    <Mapping Key="SharePoint.DocumentSet" value="icdocset.gif"/>
    <Mapping Key="SharePoint.WebPartPage.Document" value="icsmrtpg.gif" EditText="Mi
    <Mapping Key="Visio.WebDrawing" value="icvdw.gif" EditText="Microsoft Visio" Ope
    <Mapping Key="Word.Document" value="ichtmdoc.gif" EditText="Microsoft Word" open
    <Mapping Key="XDocs.Document" value="icxddoc.gif" EditText="Microsoft InfoPath"
    <Mapping Key="SharePoint.Link" value="DOCLINK.GIF"/>
    <Mapping Key="SharePoint.SearchAdminReport" value="icsadrep.gif" EditText="Micro
  </ByProgID>
  <ByExtension>
    <Mapping key="pdf" value="pdficon.gif"/>
    <Mapping Key="accdb" value="icaccdb.gif" EditText="Microsoft Access" OpenContro
    <Mapping Key="accdt" value="icaccdb.gif"/>
    <Mapping Key="accdc" value="icaccdb.gif"/>
    <Mapping Key="accde" value="icaccde.gif" EditText="Microsoft Access" OpenContro
    <Mapping Key="accdr" value="icaccde.gif" EditText="Microsoft Access" OpenContro
    <Mapping Key="asax" value="icasax.gif" OpenControl="" />
    <Mapping Key="ascx" value="icascx.gif" EditText="Microsoft SharePoint Designer"
    <Mapping Key="asmx" value="icasmx.gif" OpenControl="" />
    <Mapping Key="asp" value="ichtm.gif" OpenControl="" />
    <Mapping Key="aspx" value="ichtm.gif" EditText="Microsoft SharePoint Designer" o
    <Mapping Key="bmp" value="icbmp.gif"/>
    <Mapping Key="cat" value="iccat.gif" OpenControl="" />
  </ByExtension>
</DocIcons>

```

c. Click Save on the File menu, and then quit Notepad.

3. Perform an iisreset:

1. Click Start > Run > type "cmd" in the Open dialog box > click OK > type "iisreset" at the command prompt > Enter.



```

C:\E:\WINDOWS\system32\cmd.exe
Microsoft Windows [Version 5.2.3790]
(C) Copyright 1985-2003 Microsoft Corp.

E:\Documents and Settings\Administrator> iisreset
Attempting stop...
Internet services successfully stopped
Attempting start...
Internet services successfully restarted
E:\Documents and Settings\Administrator>_

```

2. Close the windows.

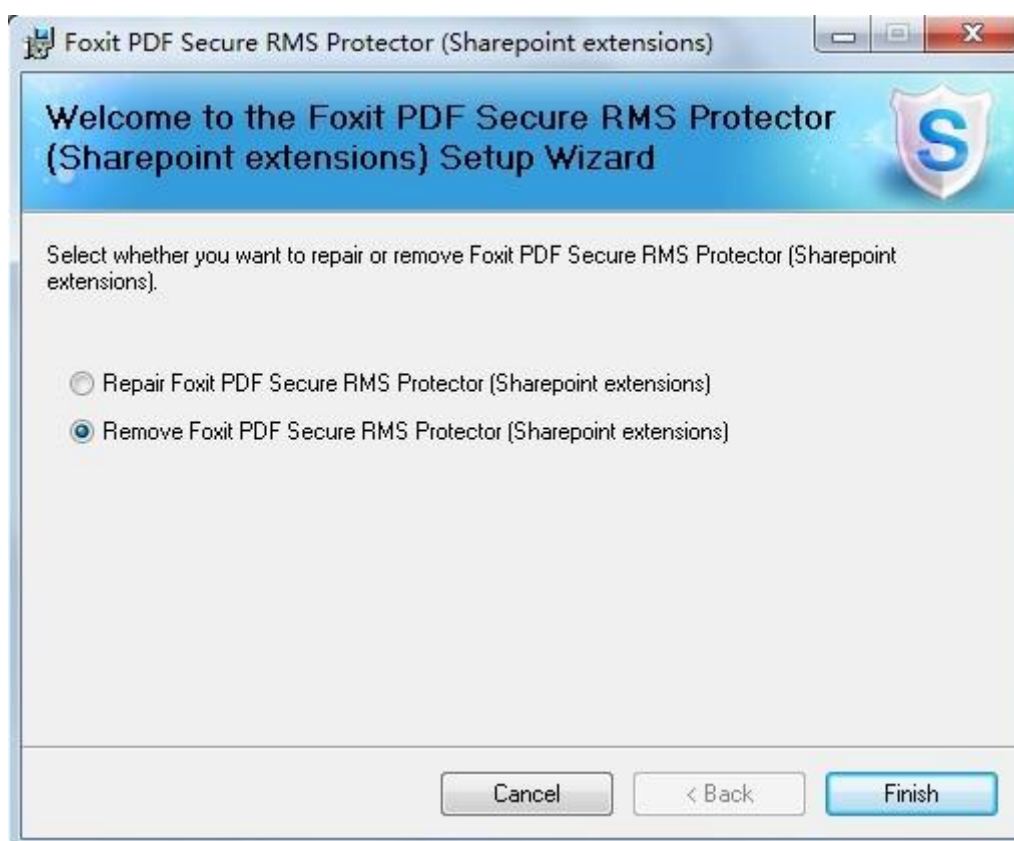
Uninstalling Foxit PDF Secure RMS Protector

To uninstall:

- Open the Start Menu > Settings > select "Control Panel".
- Click the "Add or Remove Programs" tab.
- Click the "Foxit PDF Secure RMS Protector" record and then click the "Remove/Uninstalled" button to uninstall it.

Or you can double-click the SharePointPDFProtector.msi setup file that you have used to install Foxit PDF Secure RMS Protector, and perform the following:

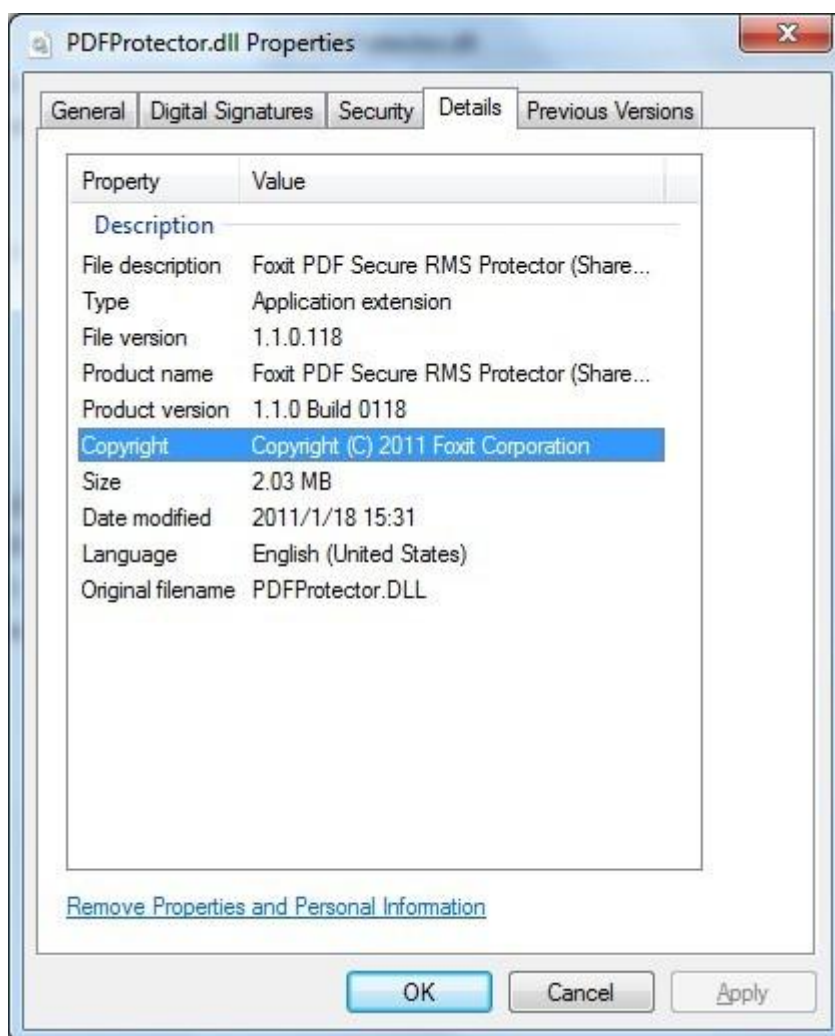
- In the Foxit PDF Secure RMS Protector dialog box, select Remove Foxit PDF Secure RMS Protector



- Click Finish button to complete removal.

✚ Check the version of Foxit PDF Secure RMS Protector

- Please navigate to the folder where Foxit PDF Secure RMS Protector installed. Right-click PDFProtector.dll > choose Properties > click the Details tab, then you can examine the version information of Foxit PDF Secure RMS Protector:



Chapter 3 - Configuring AD RMS to Work with SPS-SRV



Note: If you have configured AD • RMS when you were installing SharePoint, please skip this chapter.

For MOSS 2007

To add SPS-SRV to Local Intranet

- Log on SPS-SRV as domain administrator, e.g., WIONS\administrator.
- Click **Start**. Point to **Control Panel**, and then click **Internet Options**.
- Click the **Security** tab, and choose **Local Intranet**, and then click the **Sites** button
- Type **http://SPS-SRV**, and then click **Add**. Note: SPS-SRV is the computer's name of MOSS server.
- Click **Close**, and then choose **OK**

To add SPS-SRV to the AD • RMS Certification Pipeline

4. Log on ADRMS-SRV as CPANDL\Administrator.
5. Click **Start**, and then click **Computer**.
6. Navigate to C:\Inetpub\wwwroot_wmcs\Certification.
7. Right-click **ServerCertification.asmx**, and choose **Properties**, and then click the **Security** tab.
8. Click **Advanced**>**Edit**, and select the check box **Include inheritable permissions from this object's parent**. Then click **OK** two times.
9. Click **Edit**, and then click **Add**.
10. Click **Object Types**, and select the check box **Computers**, then click **OK**.
11. Type the computer's name of MOSS server, such as **SPS-SRV**, and then click **OK**.
12. Click **OK** to close the **ServerCertification.asmx Properties** sheet.
The default Read & Execute and Read permissions are configured for the SPS-SRV computer account object and other accounts' are all inherited from the parent folder.

13. Click **Start**, and then click **Command Prompt**.

14. Type **iisreset**, and then press ENTER.

To activate Information Rights Management in Office SharePoint Server 2007

Please do the following:

15. Log on SharePoint Server as the administrator.

16. Click **Start**, and point to **Administrative Tools**, then click **SharePoint 3.0 Central Administration**.

17. Click **Operations**, and choose **Information Rights Management**.

18. Click **Use the default RMS server specified in Active Directory**.

19. Click **OK**.

To restrict permissions using AD • RMS

- Log on as CPANDL\administrator.
- Click **Start**, point to **All Programs**, and then click **Internet Explorer**.
- Type **http://SPS-SRV** in the address bar, and then click **Go**.
- Click **Shared Documents**, and choose **Library page**, and then click **Library Settings button**.
- Under the **Permissions and Management** heading, click **Information Rights Management**.
- Select the check box **Restrict permission to documents in this library on download**.
- Type **CPANDL Protected** in the **Permissions policy title** box.
- Type **Restrict CPANDL employees from printing** in the **Permission policy description** box.
- Click **OK**.

For MOSS 2010

To add SPS-SRV to Local Intranet

- Log on SPS-SRV as domain administrator, e.g., CPANDL\administrator.
- Click **Start**, and point to **Control Panel**, then choose **Internet Options**.

- Click the **Security** tab, and choose **Local Intranet**, and then click the **Sites** button.
- Type **http://SPS-SRV**, and then click **Add**. Note: SPS-SRV is the computer's name of MOSS2010 server.
- Click **Close**, and then click **OK**.

To add SPS-SRV to the AD • RMS Certification Pipeline

20. Log on ADRMS-SRV as CPANDL\Administrator.
21. Click **Start**, and then click **Computer**.
22. Navigate to C:\Inetpub\wwwroot_wmcs\Certification.
23. Right-click **ServerCertification.asmx**, and click **Properties**, then choose the **Security** tab.
24. Click **Advanced** and choose the **Edit**. Select the check box **Include inheritable permissions from this object's parent**, and then click **OK** two times.
25. Click **Edit**, and then click **Add**
26. Click **Object Types**, select the check box **Computers**, and then click **OK**
27. Type the computer's name of MOSS server, such as **SPS-SRV**, and then click **OK**
28. Click **OK** to close the **ServerCertification.asmx Properties** sheet. The default Read & Execute and Read permissions are configured for the SPS-SRV computer account object and other accounts are all inherited from the parent folder.
29. Click **Start**, and then click **Command Prompt**.
30. Type **iisreset**, and then press ENTER

To activate Information Rights Management in Office SharePoint Server 2010

Please do the followings:

31. Log on SharePoint Server as administrator.
32. Click **Start**, and point to **Administrative Tools**, then click **SharePoint 2010 Central Administration**.
33. Click **Security (on the left)**, and then click **Configure Information Rights Management under the Information policy heading**.
34. Click **Use the default RMS server specified in Active Directory**.

35. Click **OK**.

To restrict permissions using AD • RMS

- Log on as CPANDL\administrator.
- Click **Start**, point to **All Programs**, and then click **Internet Explorer**.
- Type **http://SPS-SRV** in the address bar, and then click **Go**.
- Click **Shared Documents**, and choose **Library page**, and then click **Library Settings button**.
- Under the **Permissions and Management** heading, click **Information Rights Management**.
- Select the check box **Restrict permission to documents in this library on download**.
- Type **CPANDL Protected** in the **Permissions policy title** box.
- Type **Restrict CPANDL employees from printing** in the **Permission policy description** box.
- Click **OK**.

Chapter 4 - Working with Foxit PDF Secure RMS Protector

✚ For MOSS 2007

To add the domain user to SharePoint site

36. In the same Office SharePoint Server 2007 site, click **Home**.
37. Click **Site Actions** and point to **Site Settings**, and then click **People and Groups**.
38. Click **New**, and then choose **Add Users**.
39. Type domain users' names, such as **Ind1@cpandl.cn;Ind2@cpandl.cn** in the **Users/Groups** box, and then click **OK**. A list of users who have the permission to use the SharePoint will be displayed.

Home > Site Settings > Permissions > Add Users

Add Users: Home

Use this page to give new permissions.

Add Users
You can enter user names, group names, or e-mail addresses. Separate them with semicolons.
Add all authenticated users

Give Permission
Choose the permissions you want these users to have. You can add users to a SharePoint group (which is already assigned to a permission level), or you can add users individually and assign them to a specific permission level.
SharePoint groups are recommended as they allow for ease of permission management across multiple sites.

Users/Groups:
Ind1@cpandl.cn;Ind2@cpandl.cn

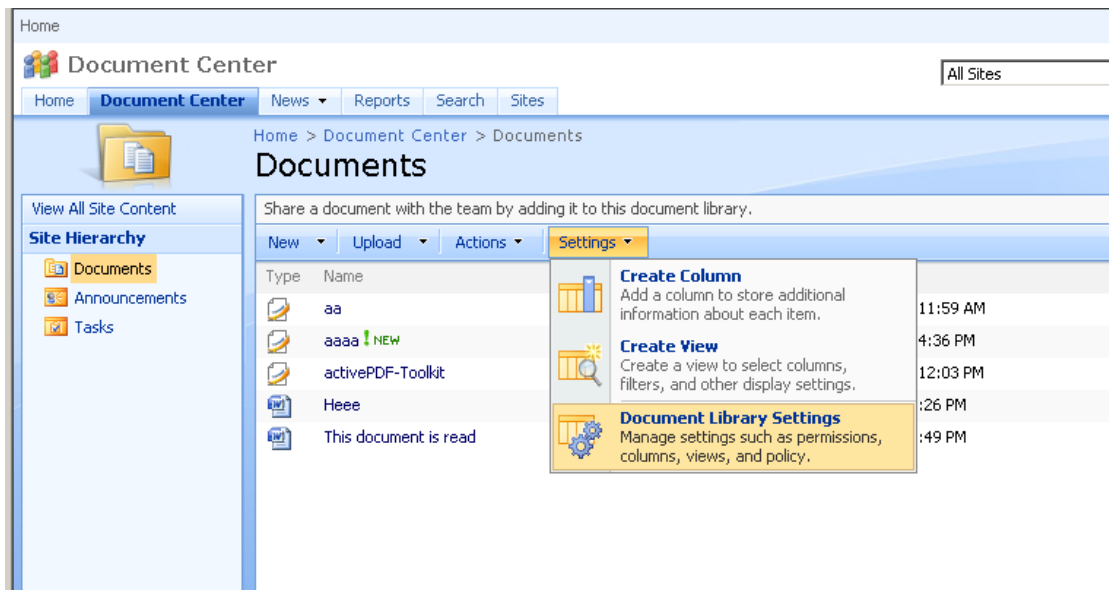
Give Permission
 Add users to a SharePoint group
 Home Members [Contribute]
 View permissions this group has on sites, lists, and items...
 Give users permission directly

- Full Control - Has full control.
- Design - Can view, add, update, delete, approve, and customize.
- Manage Hierarchy - Can create sites and edit pages, list items, and documents.
- Approve - Can edit and approve pages, list items, and documents.
- Contribute - Can view, add, update, and delete.
- Read - Can view only.
- Restricted Read - Can view pages and documents, but cannot view historical versions or review user rights information.
- View Only - Members of this group can view pages, list items, and documents. If the document has a server-side file handler available, they can only view the document using the server-side file handler.

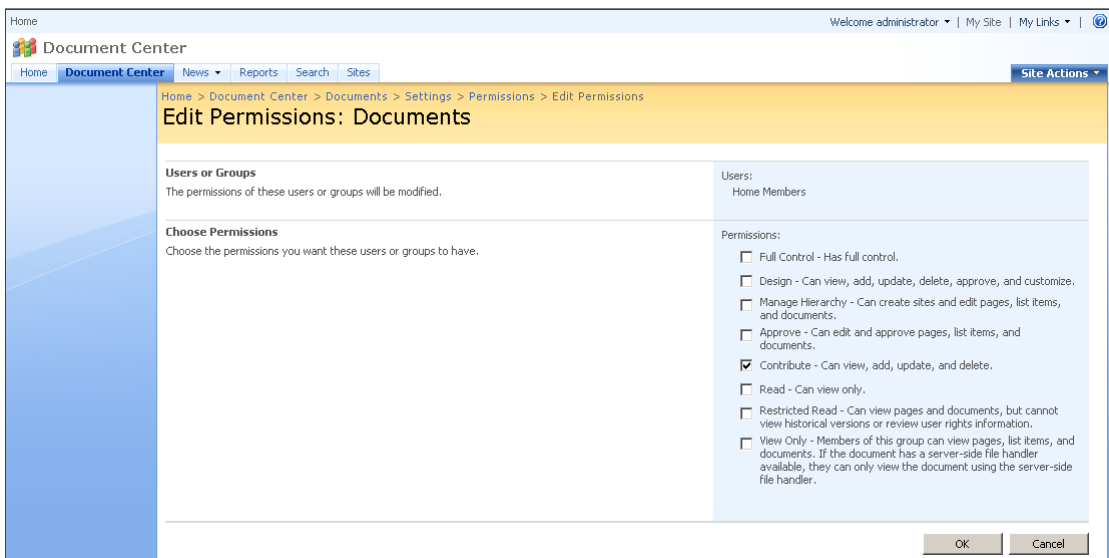
OK Cancel

To set the group permission in SharePoint site

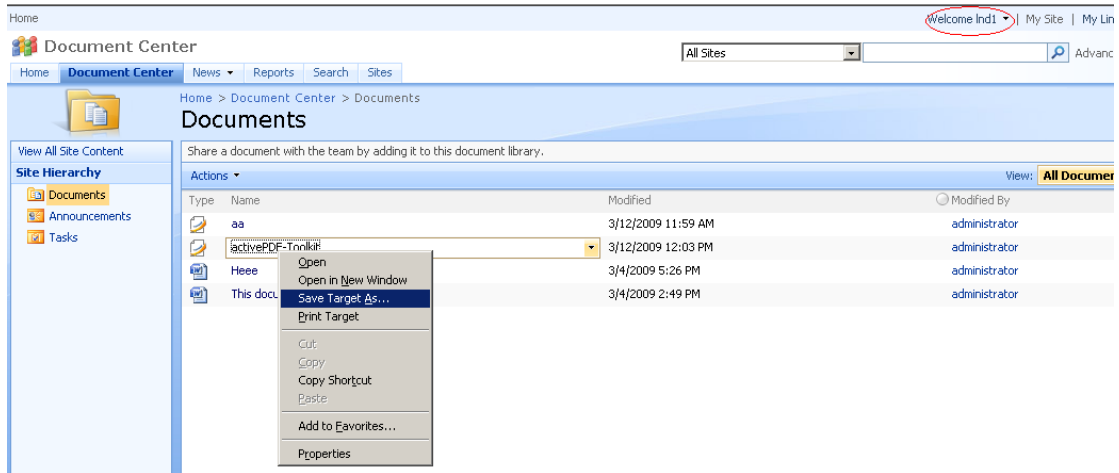
40. Navigate to the **Documents** page, log on as administrator@cpandl.com, clicking the **Settings** drop-down box and select **Document Library Settings**.



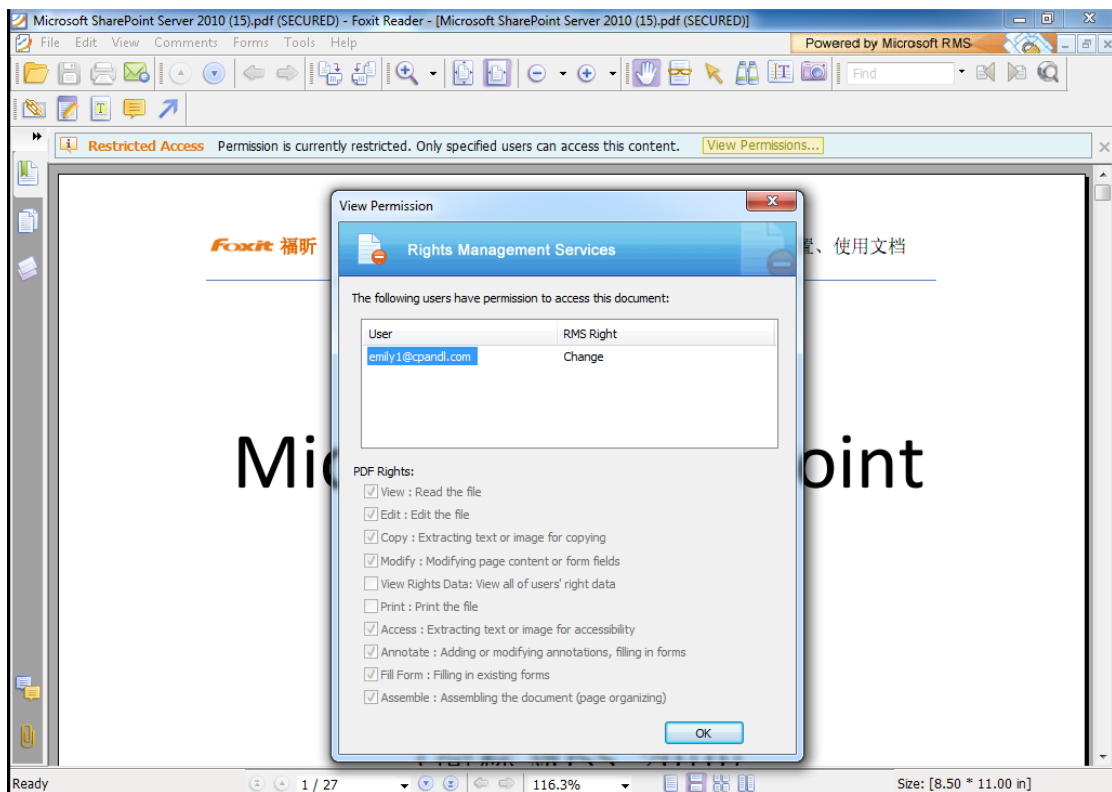
41. Click **Permissions for this document library** under Permissions and Management on the Customize Documents page.
42. Please click **Home Members** on "Permissions: Documents" page.
43. Please choose the permission you need, for example, you can choose the **Contribute-Can view, add, update, and delete**. Then click **OK**.



44. Return to **Documents** page, log on as lnd1@cpandl.com, to download a pdf file to your host.



45. Open the download pdf file by Foxit PDF Secure RMS Reader, and left-click **View Permission** to see the **RMS Right**.

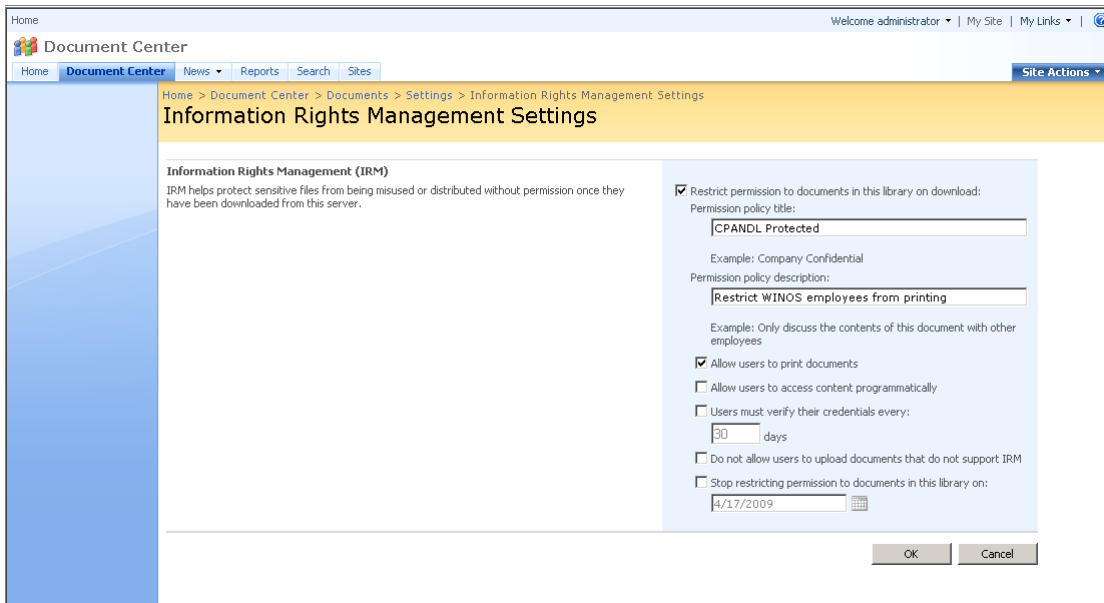


To restrict the print permissions using RMS

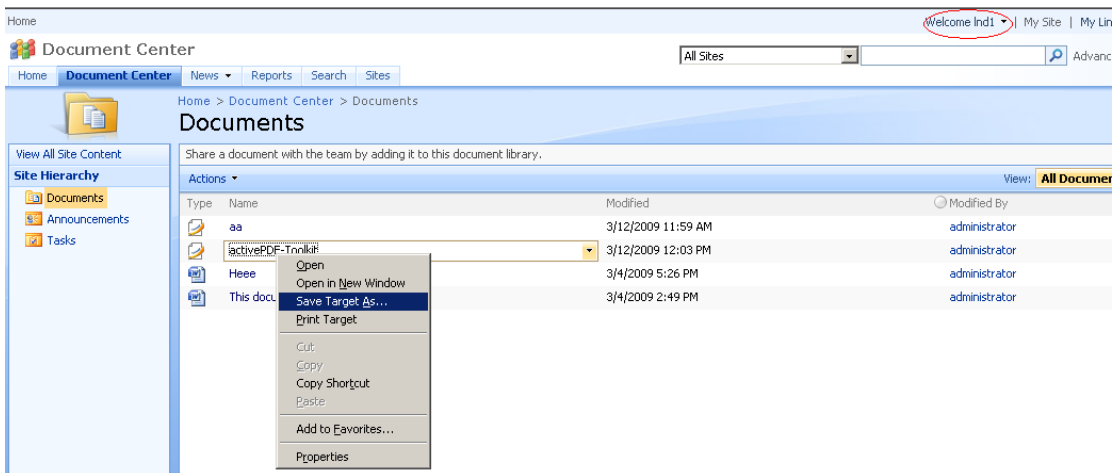
46. In the same Office SharePoint Server 2007 site, click Home.
47. Click **Document Center**, and then click **Documents**.
48. On the **Documents** page, left-clicking the **Settings** drop-down box and select **Document Library Settings**.

49. On settings page, choose **Information Rights Management** under Permissions and Management.

50. Choose **Allow users to print documents**, and then click **OK**.

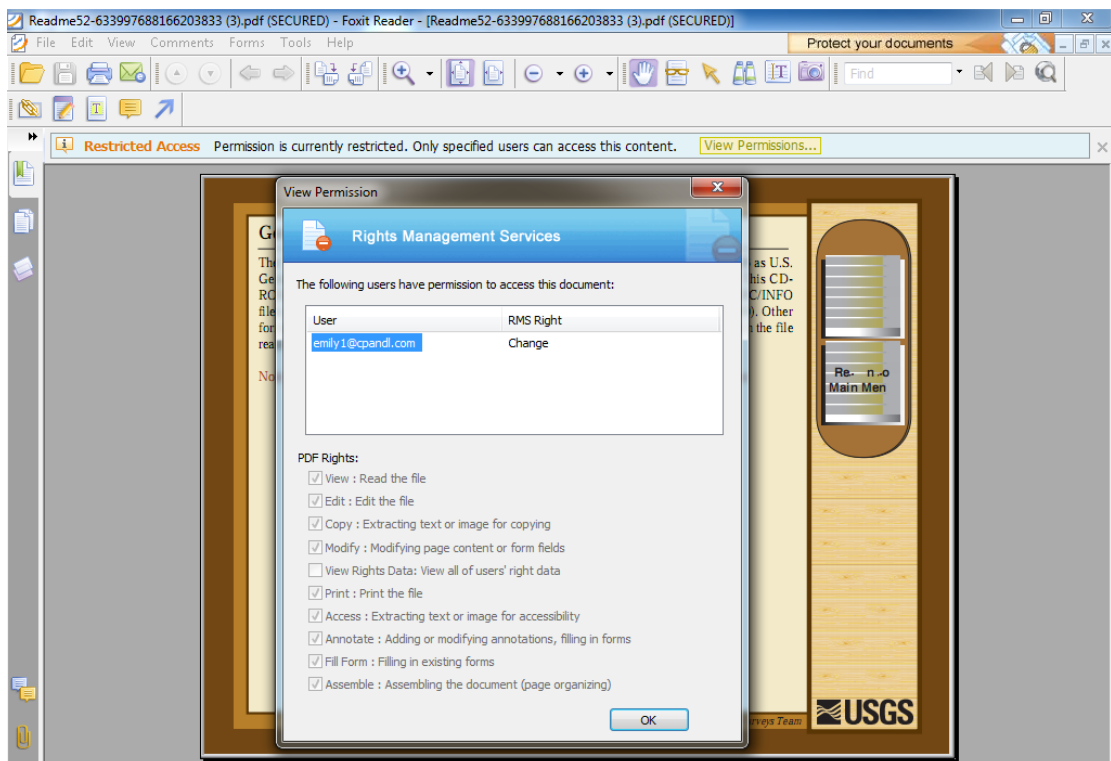


51. Return to **Documents** page, for example log on as Ind1@cpandl.cn, right-click a pdf file and **choose Save Target AS...** to save a pdf file to the local host.



52. Open the download pdf file by Foxit PDF Secure RMS Reader. Left-click **View Permission** to view the RMS Right of this file. Please see the following

picture.



✚ For MOSS 2010

To add the domain user to SharePoint site

- Click **Start**, and point to **All Programs**, then click **Internet Explorer**.
- Type **http://SPS-SRV** in the address bar, and then click **Go**. This operation will open the default Office SharePoint Server 2010 site that was created during installation.
- Click **Site Actions**, and point to **Site Settings**, and then click **People and Groups** under the **Users and Permissions** heading.
- Click **New**, and then click **Add Users**.
- Type domain users' names, such as **Ind1@cpandl.cn;Ind2@cpandl.cn** in the **Users/Groups** box, and then click **OK**. A list of users who have the permissions to use the SharePoint will be displayed.



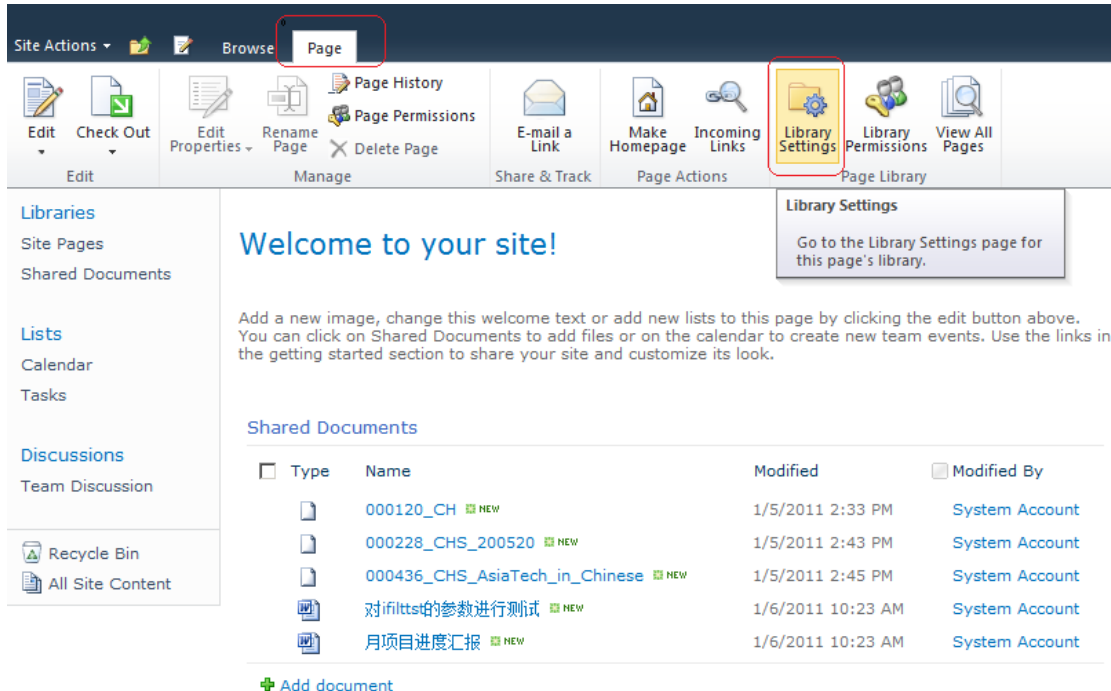
To set group permission in SharePoint site

Log on as CPANDL\Administrator.

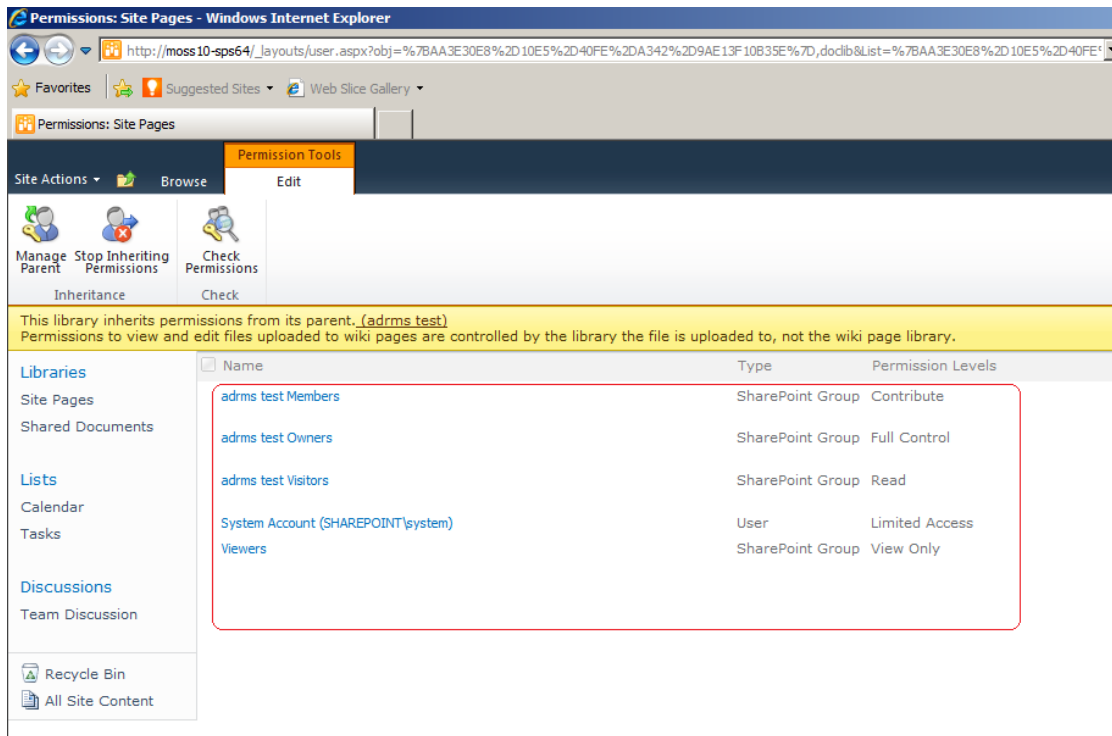
Click **Start**, and point to **All Programs**, and then click **Internet Explorer**.

Type **http://SPS-SRV** in the address bar, and then click **Go**.

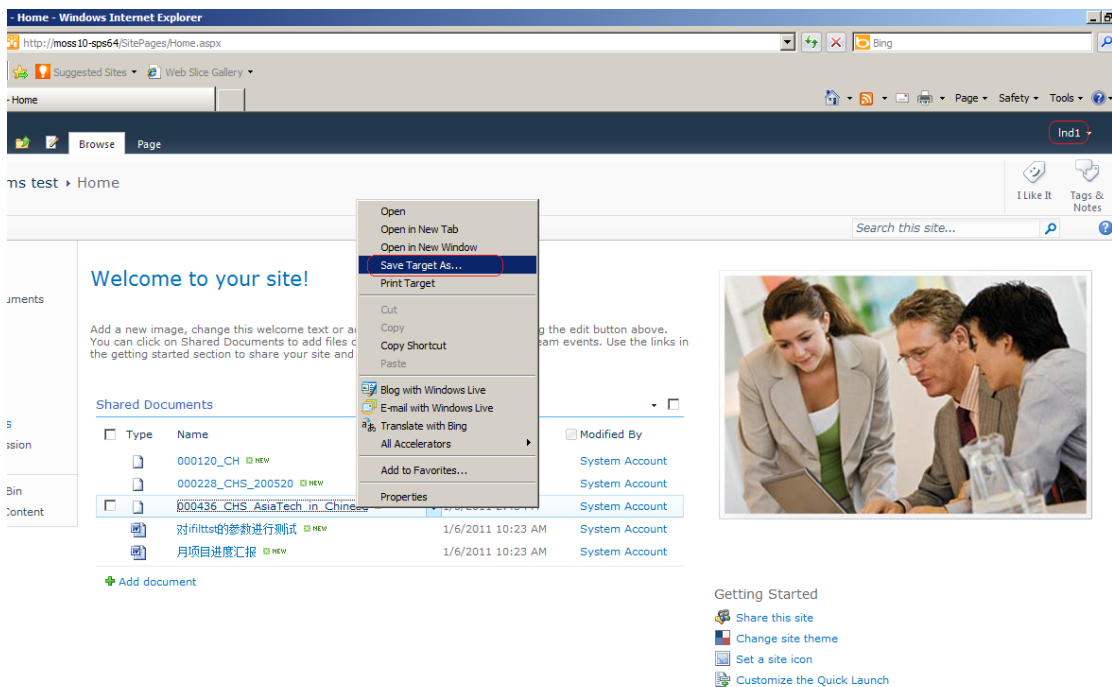
Click **Shared Documents** and **Library page**, then click **Library Settings** button.



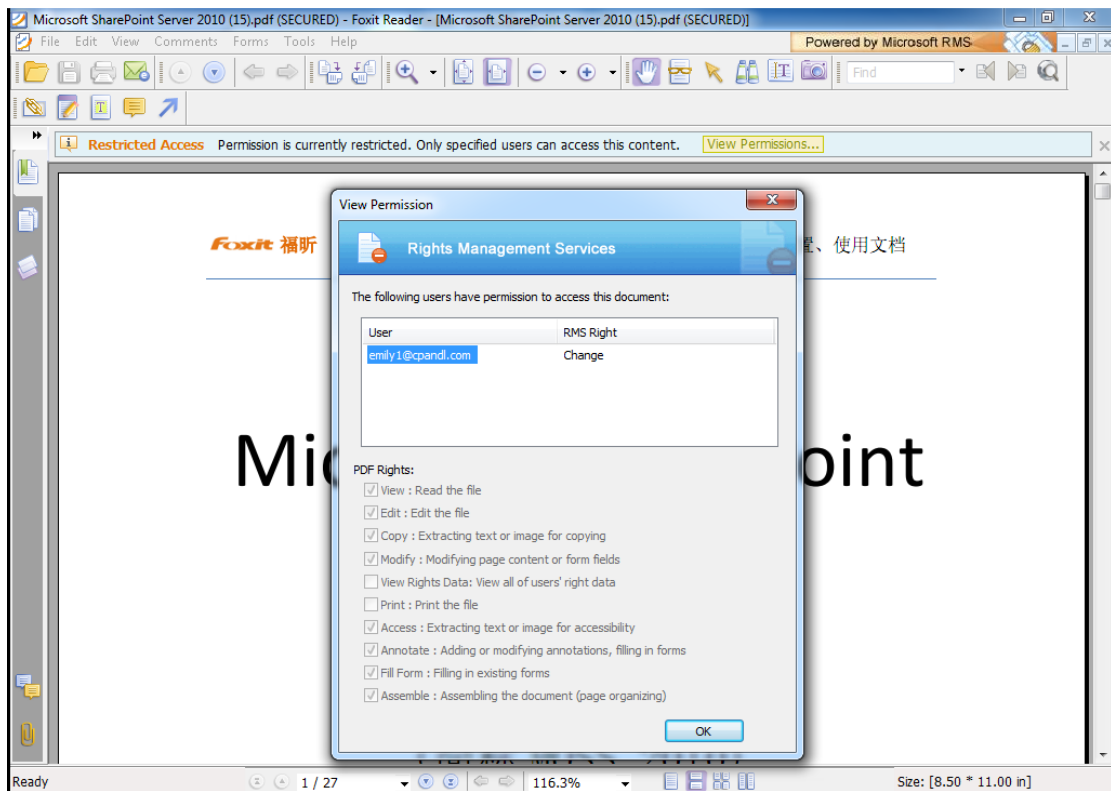
- Click **Permissions for this document library** under Permissions and Management on Customize Documents page.



54. Return to **Shared Documents** page, log on as Ind1@cpandl.com(one of AD RMS test Members), to download a pdf file to your load host.

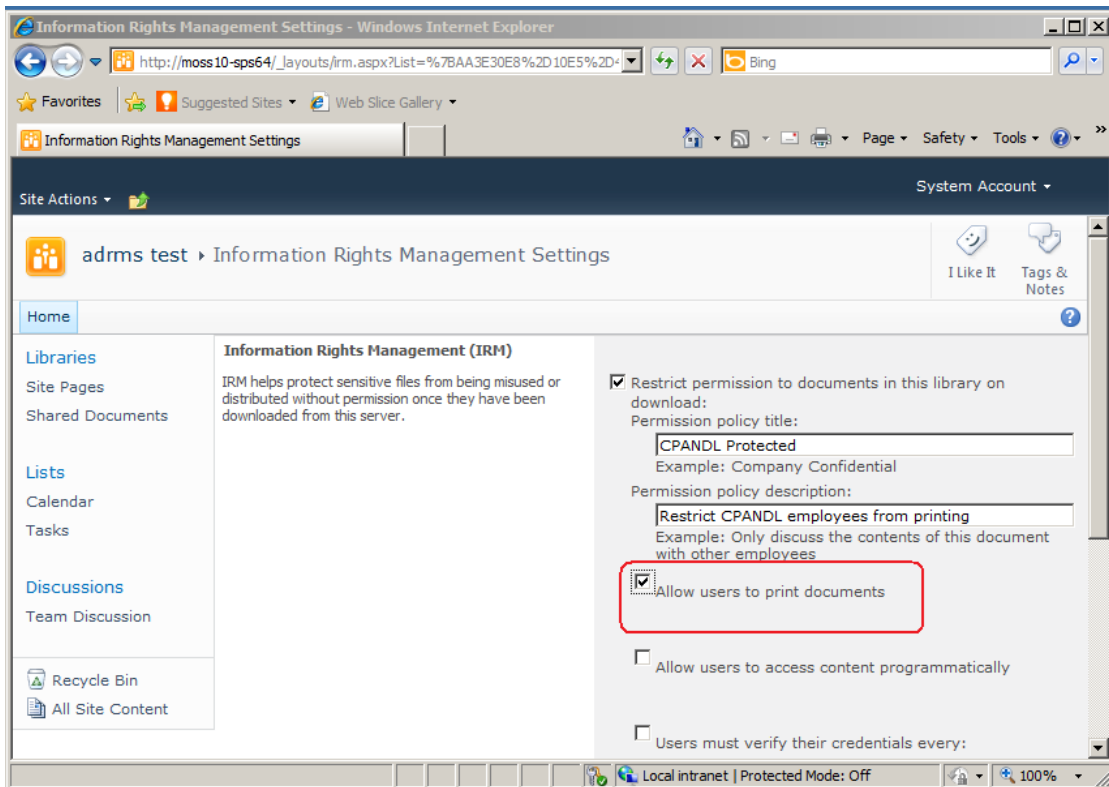


55. Open the download pdf file by Foxit PDF Secure RMS Reader, and left-click **View Permission** to see the **RMS Right**.

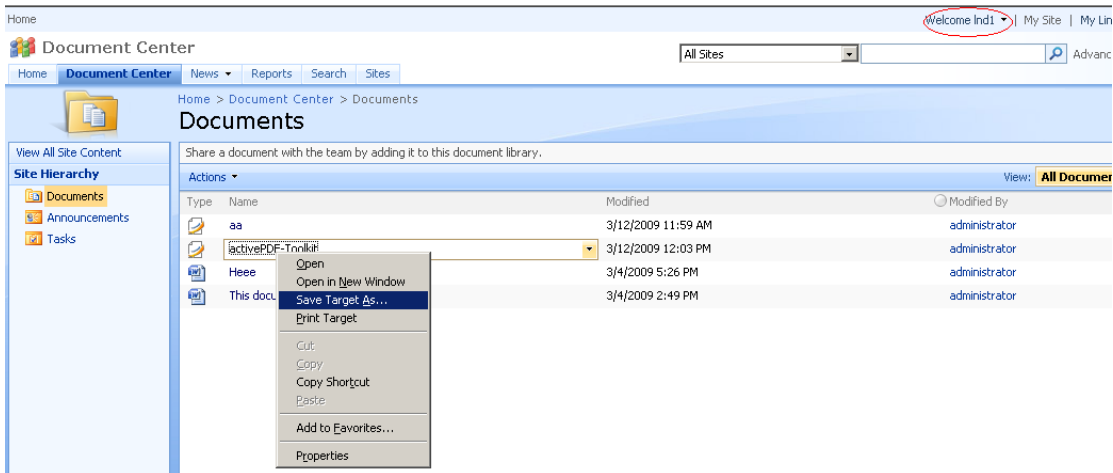


To restrict the print permissions using RMS

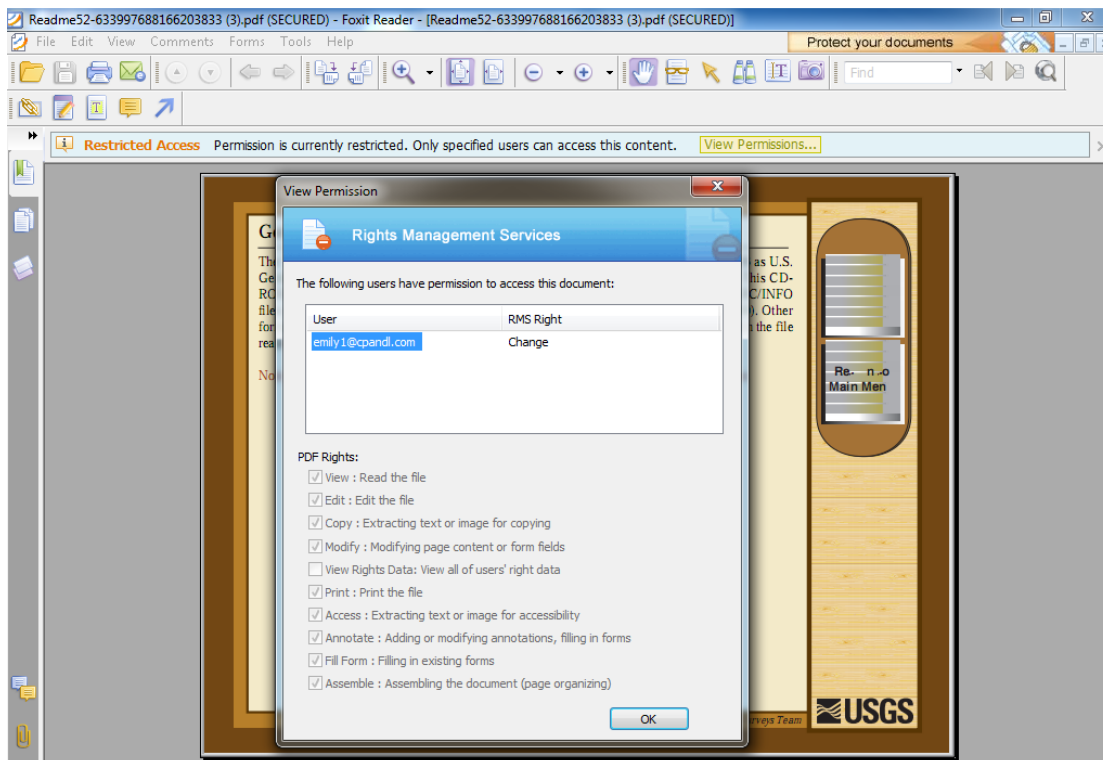
57. In the same Office SharePoint Server 2010 site, click Home.
58. Click **Shared Documents** and **Library** page, then click **Library Settings button**.
59. On the settings page, choose **Information Rights Management** under Permissions and Management.
60. Choose **Allow users to print documents**, and click **OK**.



61. Return to **Shared Documents** page, for example log on as Ind1@cpandl.com, and right-click a pdf file and **choose Save Target AS...** to save a pdf file to the local host.



62. Open the download pdf file by Foxit PDF Secure RMS Reader. Left-click **View Permission** to view the RMS Right of this file. Please see the following picture.



Chapter 5 - For Exchange 2010

Getting Started

This section provides everything about getting started with Foxit PDF Secure RMS Protector you'll need to know, including its system requirements, install and uninstall instructions.

System requirements

Computer	Operating System	Requirement
ADRMS Server	Windows Server 2008 R2	RMS, Internet Information Services (IIS) 6.0, World Wide Web Publishing Service, Message Queuing (also known as MSMQ)
DC	Windows Server 2003 with SP1	Active Directory, Domain Name System (DNS)
ADRMS-DB	Windows Server 2003 with SP1	Microsoft SQL Server™ 2005
Exchange Server 2010 Such as named EX01	Windows Server 2008 with SP2 or Windows Server 2008 R2	Exchange Server 2010 and has been added this Server to DC
Client	Win7	Client , Outlook 2010

Corresponding permissions of Foxit PDF Secure RMS Reader and Exchange

Exchange service provides there levels rights: Full control, Change, Read.

Level	Rights of Foxit PDF Secure RMS Reader
Full control	View, Copy, Modify, Print, View Data, Access, Annotate, Fill Form, Assemble
Change	View, Copy, Modify, Access, Annotate, Fill Form, Assemble
Read	View

The user can only print the document if the document library IRM settings have been configured to allow document printing.

Installing Foxit PDF Secure RMS Protector on an Exchange

Server

To install Foxit PDF Secure RMS Protector:

63. Stop the IIS Admin service: Start > Settings > Control Panel > Administrator Tools > Services > IIS Admin Service > Stop. Close window.
64. Run the Foxit PDF Secure RMS Protector Setup program to install the protector on the server.



65. After installing ,restart IIS, MExchangeTransport, msftesql-Exchange:
 1. Click Start > Run > type "cmd" in the Open line> click OK, and execute the following commands:

```
net stop MExchangeTransport
```

```
net start MExchangeTransport
```

```
net stop msftesql-Exchange
```

```
net start msftesql-Exchange
```

```
net start MExchangeSearch
```

```
iisreset
```

```

Administrator: C:\Windows\system32\cmd.exe
Microsoft Windows [Version 6.1.7600]
Copyright (c) 2009 Microsoft Corporation. All rights reserved.

C:\Users\Administrator.CPANDL>net stop MExchangeTransport
The Microsoft Exchange Transport service is stopping.
The Microsoft Exchange Transport service was stopped successfully.

C:\Users\Administrator.CPANDL>net start MExchangeTransport
The Microsoft Exchange Transport service is starting..
The Microsoft Exchange Transport service was started successfully.

C:\Users\Administrator.CPANDL>net stop msftesql-Exchange
The following services are dependent on the Microsoft Search (Exchange) service
Stopping the Microsoft Search (Exchange) service will also stop these services.

Microsoft Exchange Search Indexer

Do you want to continue this operation? (Y/N) [N]: y
The Microsoft Exchange Search Indexer service is stopping.....
The Microsoft Exchange Search Indexer service was stopped successfully.

```

```

Administrator: C:\Windows\system32\cmd.exe
The Microsoft Exchange Search Indexer service was stopped successfully.
The Microsoft Search (Exchange) service is stopping.
The Microsoft Search (Exchange) service was stopped successfully.

C:\Users\Administrator.CPANDL>net start msftesql-Exchange
The Microsoft Search (Exchange) service is starting.
The Microsoft Search (Exchange) service was started successfully.

C:\Users\Administrator.CPANDL>net start MExchangeSearch
The Microsoft Exchange Search Indexer service is starting.
The Microsoft Exchange Search Indexer service was started successfully.

C:\Users\Administrator.CPANDL>iisreset

Attempting stop...
Internet services successfully stopped
Attempting start...
Internet services successfully restarted

C:\Users\Administrator.CPANDL>_

```

2. Close the windows.

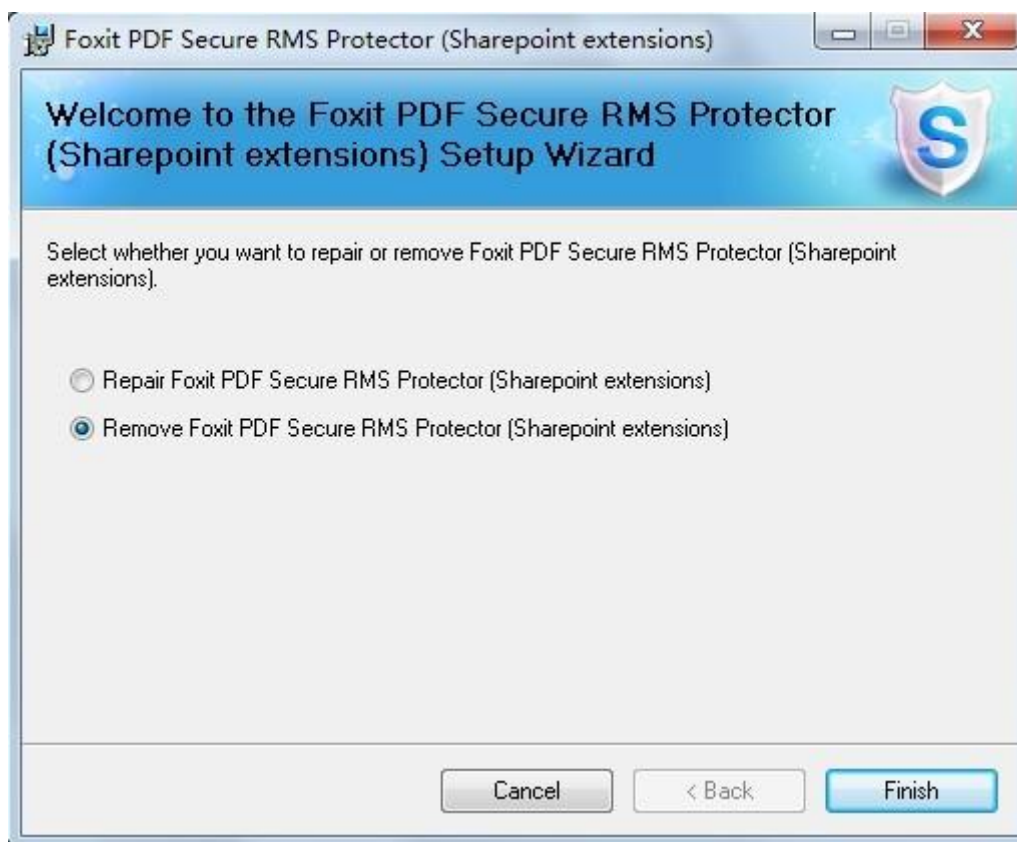
Uninstalling Foxit PDF Secure RMS Protector

To uninstall:

- Open the Start Menu > Control Panel->Programs->Programs and Features
- Click the "Foxit PDF Secure RMS Protector" record and then click the "Uninstall" button to uninstall it.

Or you can double-click the PDFProtector.msi setup file that you have used to install Foxit PDF Secure RMS Protector, and then do the followings:

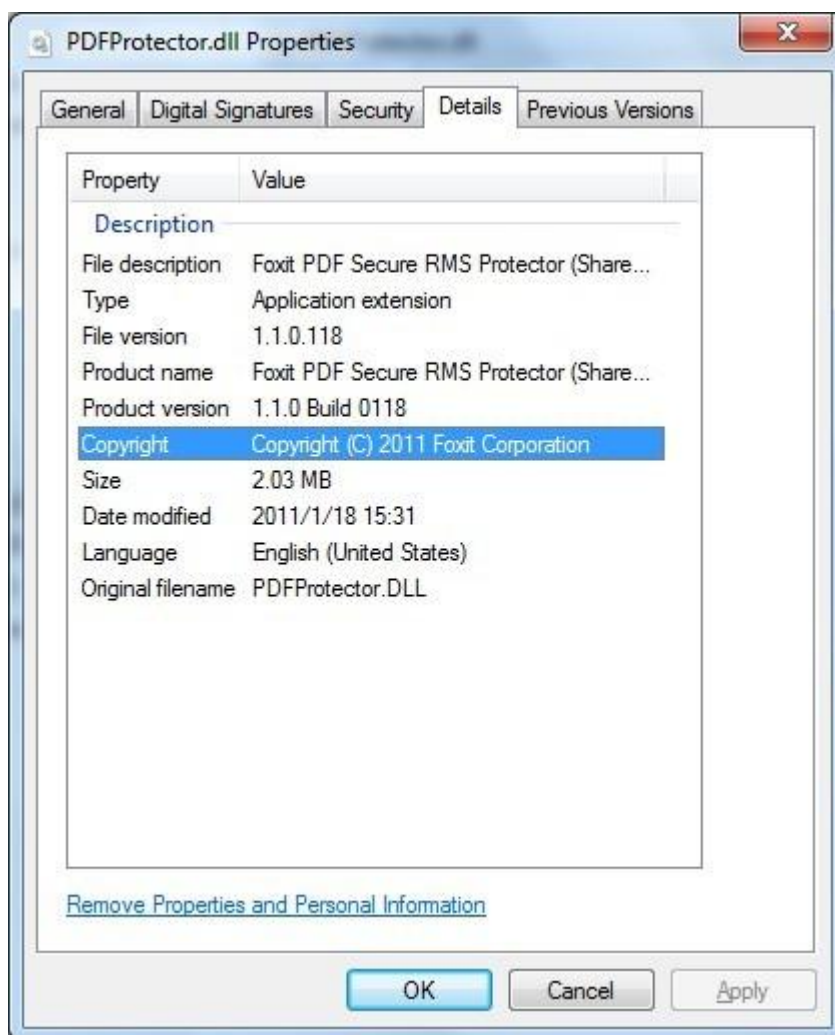
- In the Foxit PDF Secure RMS Protector dialog box, select Remove Foxit PDF Secure RMS Protector



- Click Finish button to uninstall it completely.

Check the version of Foxit PDF Secure RMS Protector

- Please navigate to the folder where Foxit PDF Secure RMS Protector installed. Right-click PDFProtector.dll > choose Properties > click the Details tab, then you can examine the version information of Foxit PDF Secure RMS Protector ,as shown:



✚ Configuring AD • RMS to Integrate with Exchange Server 2010 in a Single Forest

 **Note:** If you have configured AD • RMS when you were installing Exchange, please skip this operation.

To register a service connection point

1. Log on ADRMS server as CPANDL\ADRMSADMIN in the cluster on which you want to register an SCP.
2. Open the Active Directory Rights Management Services console.
3. Right-click the AD • RMS cluster, and then click **Properties**.
4. Click the **SCP** tab.

5. Select the **Change SCP** check box.
6. Click the **Set the SCP to current certification cluster** option, and then click **OK**.
7. Click **Yes** to confirm.

To give Exchange servers permissions to access the server certification pipeline

1. Log on an ADRMS server as CPANDL\administrator in the AD • RMS cluster.
2. Click **Start**, and then click **Computer**.
3. Navigate to %systemdrive%\Inetpub\wwwroot_wmcs\Certification.
4. Right-click **ServerCertification.asmx**, and then click **Properties**.
5. In the **ServerCertification.asmx Properties** dialog box, click the **Security** tab.
6. Click the **Continue** button or the **Edit** button.
7. In the **Permissions for ServerCertification.asmx** dialog box, click **Add**.
8. In the **Select User, Computer, Service Account, or Group** dialog box, click **Object Types**, and select the **Computers** check box, then click **OK**.
9. Type **Exchange Servers** to add the Exchange Servers group, or type the names of the Exchange servers that you want to add, separated by semicolons.
10. Click **Check Names**, and then click **OK**.
11. Under **Allow**, make sure that the **Read & execute** and the **Read** check boxes are selected.
12. Click **OK**.

13. If the AD • RMS Service Group does not appear in the **Group or user names** list, repeat the steps 6–11 to add it.
14. Click **OK** to close all dialog boxes.
15. Repeat the steps 1–14 on all other servers in the AD • RMS cluster.

To set up the Exchange Server super users group

1. Log on AD • RMS server as CPANDL\ADRMSADMIN, and open the Active Directory Rights Management Services console and expand the AD RMS cluster.
2. In the console tree, expand **Security Policies**, and then click **Super Users**.
3. In the **Actions** pane, click **Enable Super Users**.
4. In the results pane, click **Change Super User Group** to open the **Super Users** properties sheet.
5. In the **Super user group** box, type the e-mail address of the designated super users group, or click **Browse** to navigate through the defined users and groups in the directory. (Such as SuperRMSAdmin@cpandl.com)
6. Click **OK**.

To set InternalLicensingEnable true by ExchangeManagement Shell

1. Log on as **CPANDL\Administrator** to **EXO1**
2. Navigate to Start->All Programs->Microsoft Exchange Server 2010->Exchange Management Shell
3. Type "Get-IRMConfiguration"

```

Machine: EX01.cpandl.com
Tip of the day #47:
You can control which features are available to Outlook Web Access users h
pe:

Set-OwaVirtualDirectory "OWA <Default Web Site>" -ContactsEnabled $True -

VERBOSE: Connecting to EX01.cpandl.com
VERBOSE: Connected to EX01.cpandl.com.
[PS] C:\Windows\system32>Get-IRMConfiguration

InternalLicensingEnabled : False
ExternalLicensingEnabled : False
JournalReportDecryptionEnabled : True
OWAEnabled : True
SearchEnabled : True
TransportDecryptionSetting : Optional
ServiceLocation :
PublishingLocation :
LicensingLocation : <>

[PS] C:\Windows\system32>

```

4. Type " Set-IRMConfiguration -InternalLicensingEnable \$true" to enable licensing.
5. Type " Get-IRMConfiguration " again ,to check InternalLicensingEnalbe is true.

```

Machine: EX01.cpandl.com
Has one of your users asked you to recover their mobile device synchronization password? To return the user's password,
type:

Get-ActiveSyncDeviceStatistics -ShowRecoveryPassword

VERBOSE: Connecting to EX01.cpandl.com
VERBOSE: Connected to EX01.cpandl.com.
[PS] C:\Windows\system32>Set-IRMConfiguration -InternalLicensingEnable $true
WARNING: The command completed successfully but no settings of 'ControlPoint Config' have been modified.
[PS] C:\Windows\system32>Get-IRMConfiguration

InternalLicensingEnabled : True
ExternalLicensingEnabled : False
JournalReportDecryptionEnabled : True
OWAEnabled : True
SearchEnabled : True
TransportDecryptionSetting : Optional
ServiceLocation :
PublishingLocation :
LicensingLocation : <>

[PS] C:\Windows\system32>

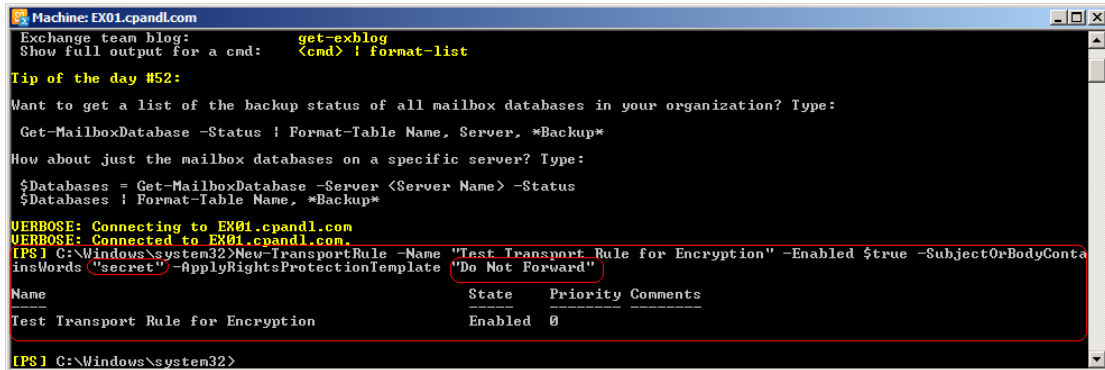
```

Working with Foxit PDF Secure RMS Protector

1. Log on as CPANDL\Administrator to EX01
2. Open the Exchange Management Shell.
3. Enter the following task and parameters:

New-TransportRule -Name "Test Transport Rule for Encryption" -Enabled \$true -

SubjectOrBodyContainsWords "secret" -ApplyRightsProtectionTemplate "Do Not Forward"



```

Machine: EX01.cpandl.com
Exchange team blog:
Show full output for a cmd: get-exchlog
                          <cmd> | format-list

Tip of the day #52:
Want to get a list of the backup status of all mailbox databases in your organization? Type:
Get-MailboxDatabase -Status | Format-Table Name, Server, *Backup*

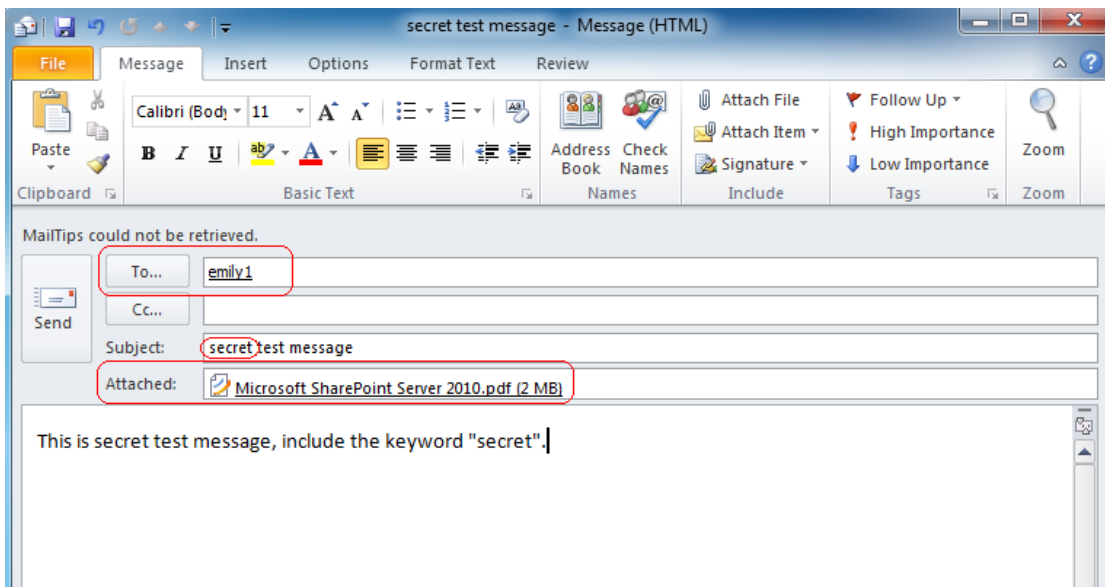
How about just the mailbox databases on a specific server? Type:
$Databases = Get-MailboxDatabase -Server <Server Name> -Status
$Databases | Format-Table Name, *Backup*

VERBOSE: Connecting to EX01.cpandl.com
VERBOSE: Connected to EX01.cpandl.com
[PS] C:\Windows\system32>New-TransportRule -Name "Test Transport Rule for Encryption" -Enabled $true -SubjectOrBodyContainsWords "secret" -ApplyRightsProtectionTemplate "Do Not Forward"

Name                                     State Priority Comments
-----
Test Transport Rule for Encryption       Enabled 0

```

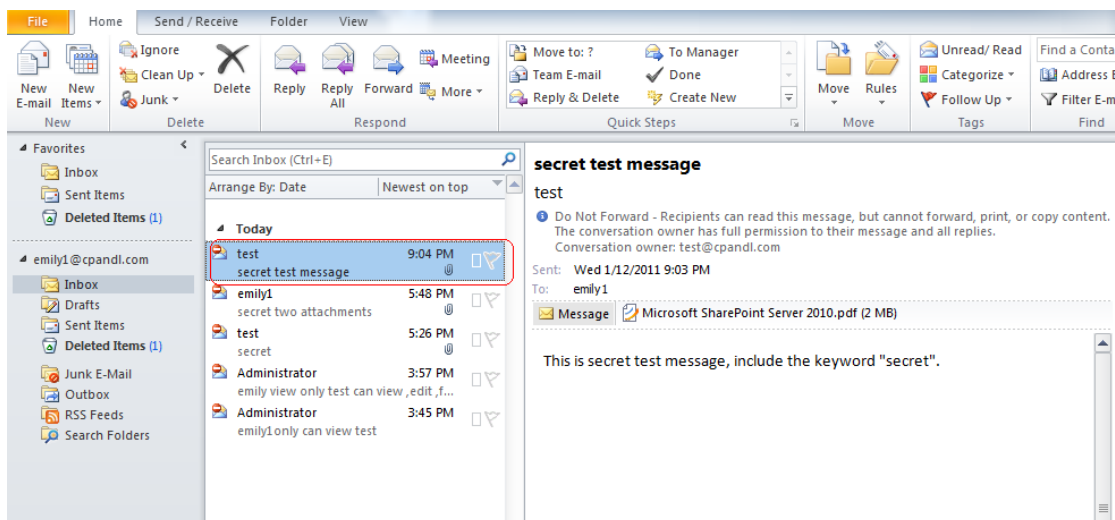
4. Log on as CPANDL\test to **Client**, and open **Microsoft Outlook 2010**, new an Email (for example, send an e-mail to emily1@cpandl.com). The Email includes the PDF attachment.



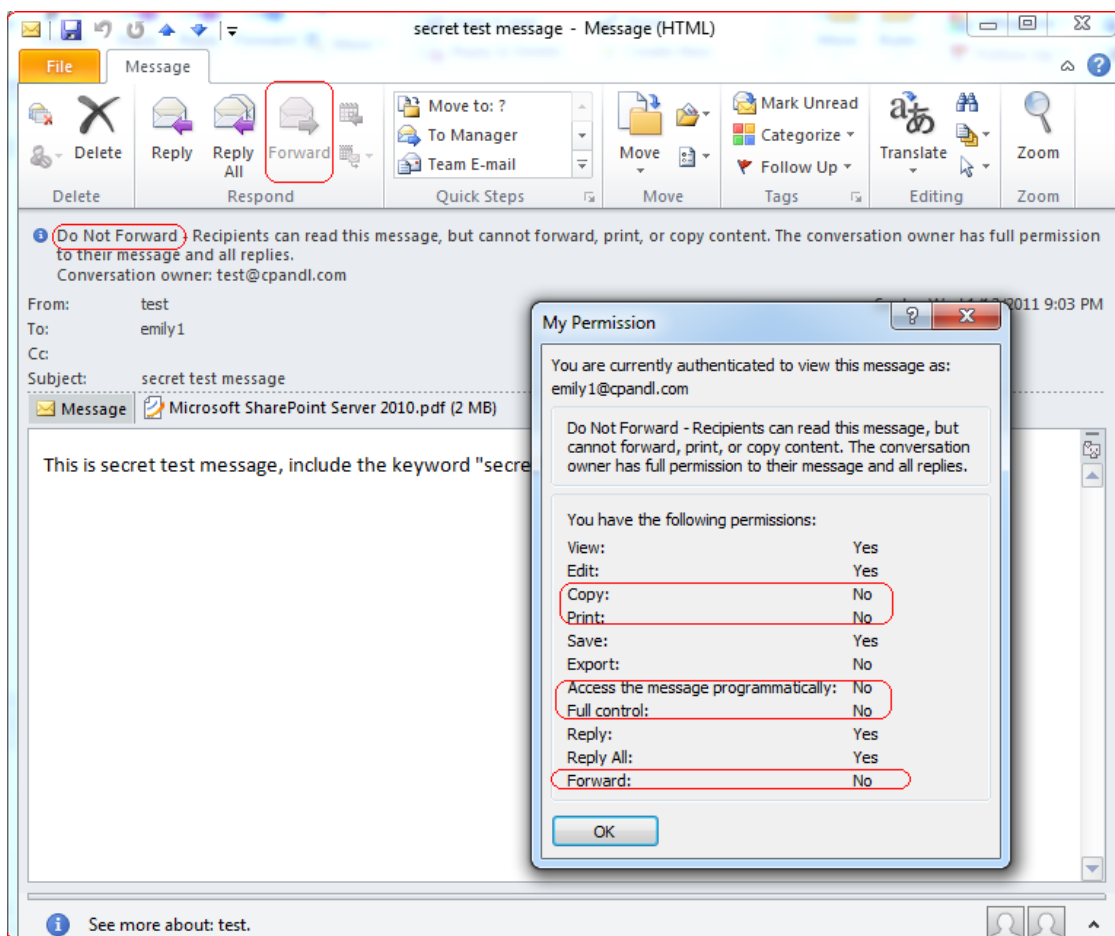
And then click **Send**.

5. Log off and log on as **CPANDL\emily1** to the Client

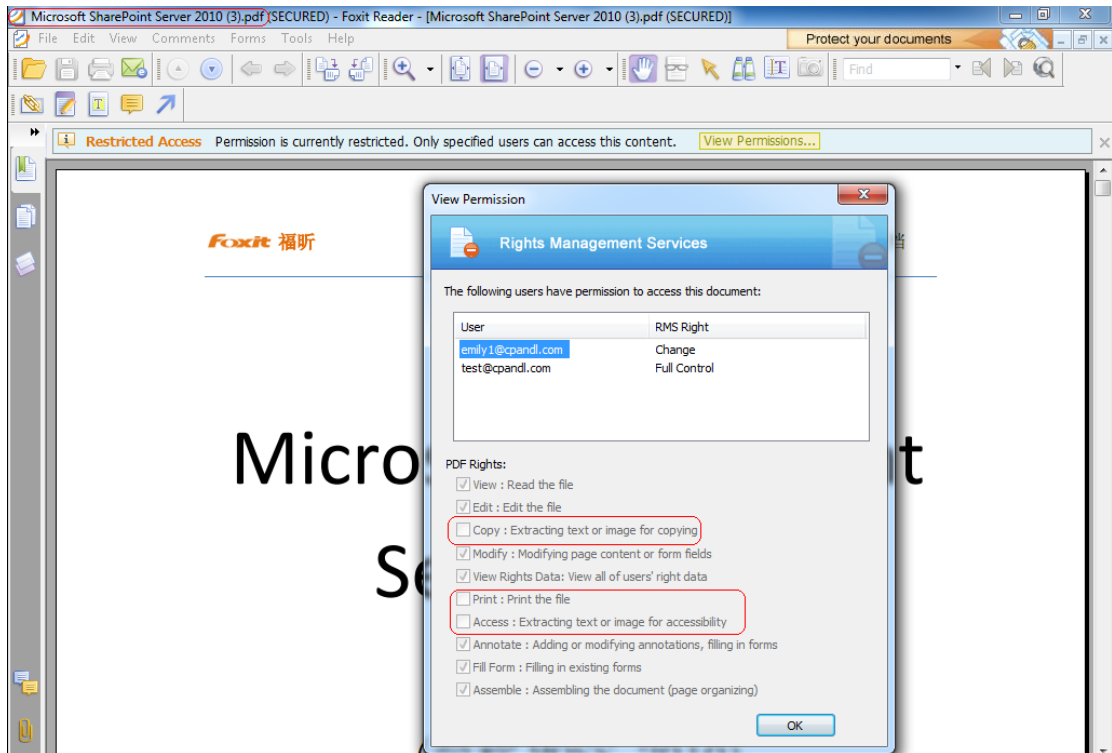
6. Open **Microsoft Outlook 2010**. In the inbox, we can see the email which has been tested to send.



7. Double click the email. We can see the email did not get forwarded. View the permission, and the detail permission is displayed as shown below-----My Permission.



8. Double click the pdf attachment to open it. We can see the permission shown below: not allowed to be printed, copied, or accessed.



Chapter 6 - FAQ

1. In the SharePoint environment, do we need to perform iisreset after installing the Foxit PDF Protector?

Yes. Foxit PDF Protector will not work immediately when it is installed. Please perform **iisreset** to ensure that the SharePoint server invokes Foxit PDF Protector.

2. Why is the PDF downloaded from the SharePoint Document Library still unprotected after installing the Foxit PDF Protector?

First, check that the IRM protection rules have been configured in the **SharePoint Document Library**. For example, ([Library Name]->Setting->Information Rights Management Settings->Restrict permission to documents in this library on downloads).

Then, clear your browser's Temporary Internet Files. For example, (IE8: Internet Options->General->Delete->check Temporary Internet files->click delete).

3. Why doesn't the Foxit PDF Protector work after being used for some period of time?

Because you can only use the Free Trial version for 30 days. If you want to continue using the Foxit PDF Protector, please contact us by sending an email to sales@foxitsoftware.com to get the formal product license.

4. I got the authorized license file. How can I use it?

Please copy the license file to the same folder where you installed Foxit PDF Protector.

Note: Please ensure that all the users in the domain have the basic permission to "Read" and "Read & Execute", or the license file may not work.

Contact Us

Feel free to contact us should you need any information or have any problems with our products. We are always here, ready to serve you better.

- **Office Address:**
Foxit Corporation
39819 Paseo Padre Parkway
Fremont CA 94538
USA
- **Mailing Address:**
Foxit Corporation
39819 Paseo Padre Parkway
Fremont CA 94538
USA
- **Sales:**
1-866-MYFOXIT or 1-866-693-6948 (8AM-5PM PST Monday - Friday)
510-438-9090 (8AM-5PM PST Monday - Friday)
- **Support:**
1-866-MYFOXIT or 1-866-693-6948 (8AM-5PM PST Monday - Friday)
979-446-0280 (6AM-5PM PST Monday - Friday)
- **Fax:**
510-435-9288
- **Website:**
www.foxitsoftware.com
- **E-mail:**
Sales and Information - sales@foxitsoftware.com
Technical Support - support@foxitsoftware.com
Marketing Service - marketing@foxitsoftware.com